



keep warm and well
...in East Sussex

www.warmeastsussex.org.uk

East Sussex Fuel Poverty Reduction Pathway

Rother LSP Conference 17th July 2019

Coordinated action to reduce fuel poverty

Louise Trenchard

East Sussex Fuel Poverty Coordinator



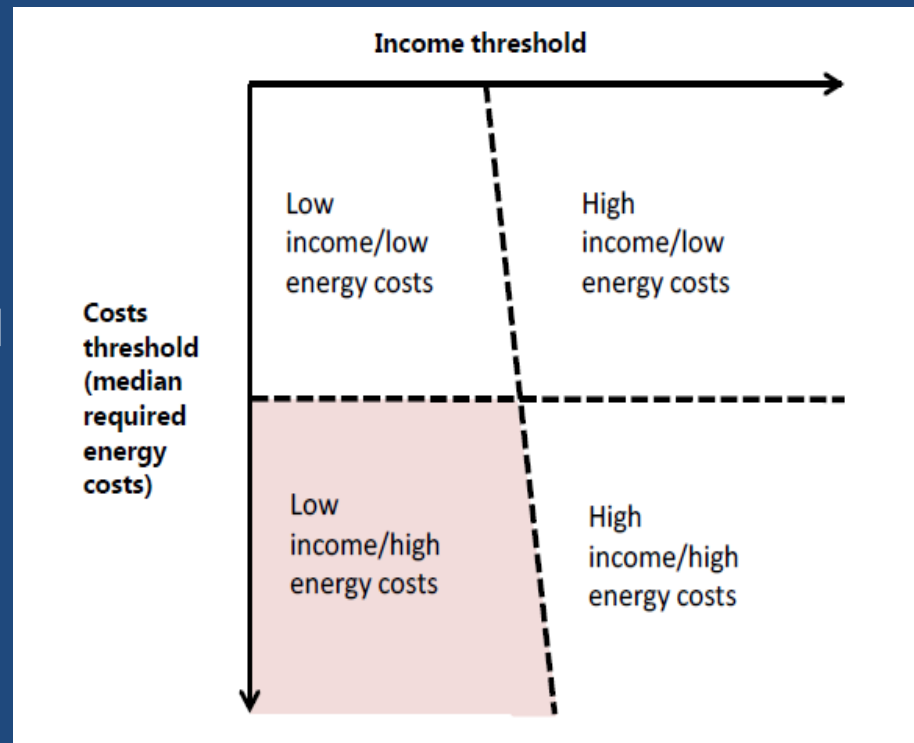
Defining Fuel Poverty

The Hills Definition

2 elements

1. **High Costs** –fuel costs for the household are above the national average, and
2. **Low income** -Were these fuel costs paid the household would be left with a residual income below the official poverty line.

A framework for future action, Department for Energy and Climate Change 2013



Causes of Fuel Poverty



Inadequate
heating and
insulation

Low incomes

High cost of
energy

Who is at risk of Fuel Poverty?

- Older people (65 and older)
- Single parents with dependent children
- Families who are unemployed or on low income
- Children and young people
- Pregnant women
- People with disabilities
- People with existing illnesses and long-term conditions,
- Single unemployed people

(NICE, 2015).

Impacts of Fuel Poverty

Varied and far reaching

Cold homes and reduced quality of life

Ill health, mental stress and excess winter deaths
the annual cost to the NHS is estimated to be £1.36
billion (Age UK, 2012).

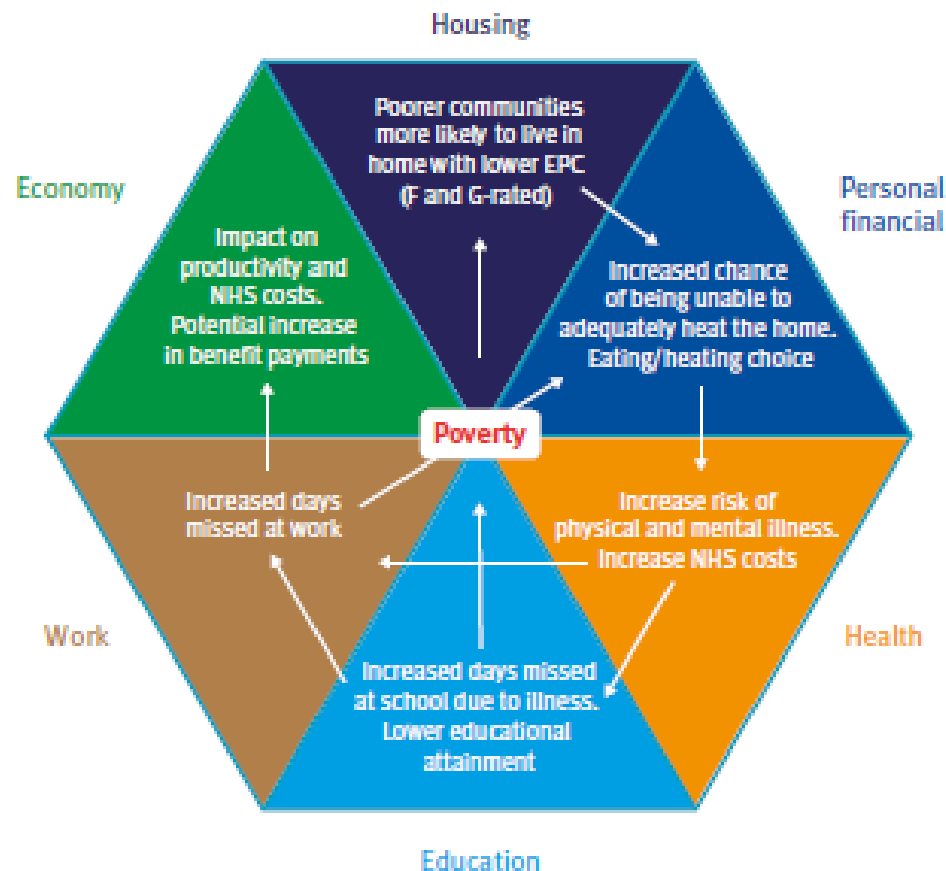
Debts to fuel companies and foregoing of other
essential needs

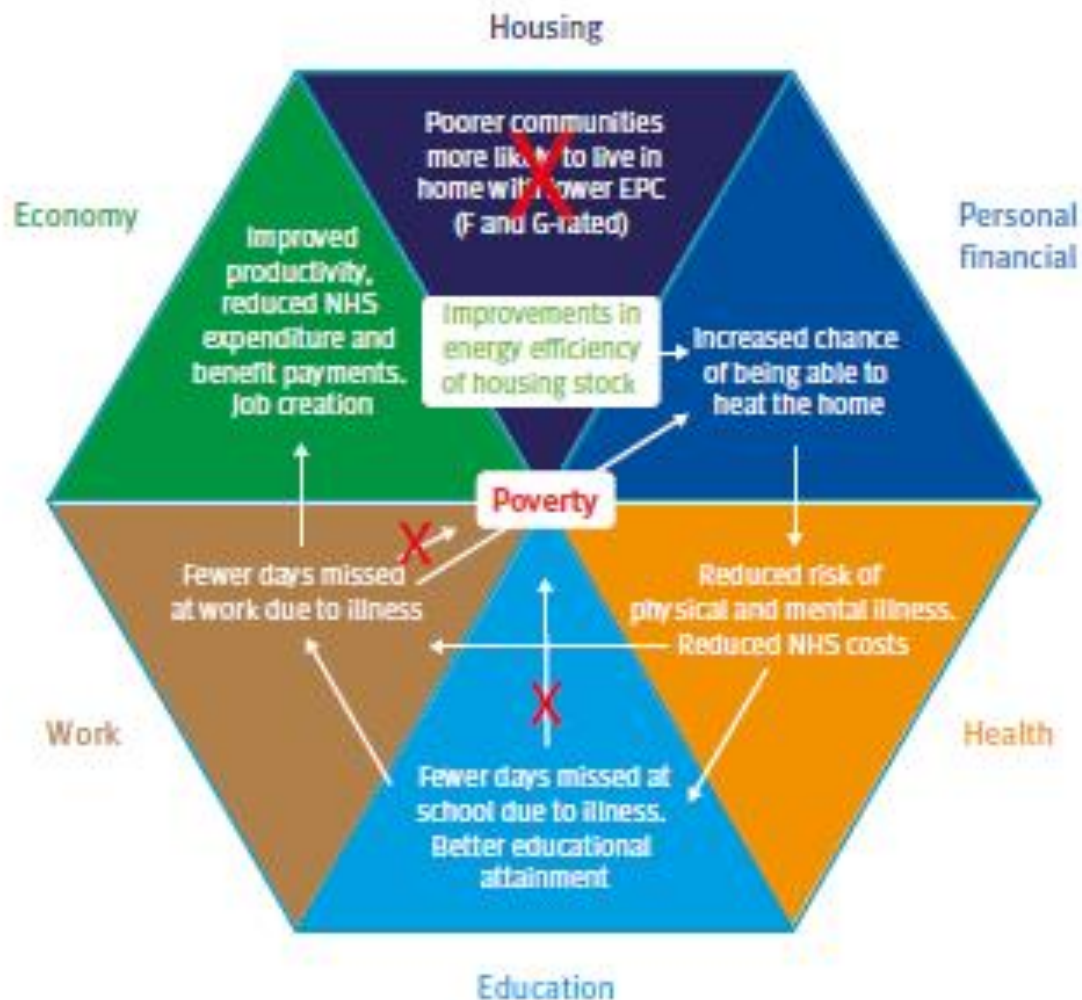
Excess Winter Deaths (EWD)

- In the 2017 to 2018 winter period, there were an estimated 50,100 excess winter deaths in England and Wales.
- Over one-third (34.7%) of all excess winter deaths were caused by respiratory diseases.
- There are on average 84* 'extra' deaths in Rother in the winter months compared with the rest of the year – these deaths are preventable. The figure for East Sussex is over 350.
- Around 30% of EWD are because of the impact cold indoor temperatures have on vulnerable people.

**Source: Count of Excess Winter Deaths (EWD), all ages, persons. Five year average 2012/13 to 2016/17. Source: ONS Annual Public Health Mortality File and Public Health Outcomes Framework: www.phoutcomes.info*

Improving energy efficiency lead to health, social and community benefits





Source: Jennings et al (2019), Co-benefits of climate change mitigation in the UK:
 What issues are the UK public concerned about and how can action on climate change help to address them?

Fuel Poverty in Rother

Overall people who are employed in East Sussex receive the lowest average weekly wage of any county or unitary authority in the South East. People in Rother have the lowest average full-time wage in East Sussex of £423.

Rother wards with high priority areas for fuel poverty targeting *	Number of LSOAs
Bexhill Central	1
Brede Valley	1
Crowhurst	2
Darwell	2
Eastern Rother	1
Ewhurst and Sedlescombe	1
Salehurst	1
Sidley	1
Ticehurst and Etchingam	1
Total	11

Area	Proportion of households fuel poor (%) (2017)
England	10.9%
South East	9.7%
Hastings	13.3%
Rother	9.8%
Eastbourne	9.7%
Lewes	8.8%
Wealden	8.3%

* Based on % of households in fuel poverty and analysis of EPCs – targeting approach agreed by ESEP

East Sussex Energy Partnership

Partnership and **coordinated approach** to interventions to tackle **health and wellbeing issues related to cold homes**, particularly for vulnerable groups, and other related issues.

Membership of East Sussex Energy Partnership includes:

- All five district and borough councils in East Sussex
- NHS Hastings and Rother Clinical Commissioning Group / NHS Eastbourne, Hailsham and Seaford CCG
- East Sussex County Council
- Three nominated voluntary sector organisations (Citizens Advice East Sussex, Sussex Community Development Association, Action in Rural Sussex)
- Local community energy organisations
- Fuel poverty charity National Energy Action

1. Train health, housing & social care professionals and voluntary & community sector workers to help people whose homes may be too cold for their health and wellbeing

- Tailored fuel poverty and health (and debt) awareness training and refresher training - Face to face or e-learning.



2. Raise awareness among professionals and the public about how to keep warm at home

- 'Keep Warm and Well in East Sussex' website and campaigns - amplify local & national advice & support

- Targeted activities in fuel poor communities – tailored approaches

- Strengthen partners' collaborative working - information sharing, practitioners' networks, protected learning sessions

- Community messaging – text, email & voicemail alerts to segmented vulnerable population groups.



3. Identify vulnerable people who live in a cold home and refer for help

- GP practice staff provide advice to vulnerable patients and refer

- Ensure vulnerable hospital patients are not discharged to a cold home

- Health, housing, social care and VCS identify at-risk people and refer

4. Single-point-of-contact health and housing referral service for vulnerable people living in cold homes

Provide tailored solutions which take into account individual needs and enables access to interventions. Follow-up to find out whether needs have been met and individuals are no longer vulnerable to the health problems associated with a cold home.



4. Provide vulnerable people with information and advice in order to maximise income

- Money advice services: CABs & Welfare Benefits Helpline
- Emergency cold home fuel payments
- Energy Switching – Big Energy Saving Network & collective switching



5. Provide access to housing insulation and heating, more affordable fuel options and how to avoid the health risks of cold homes

- **Warm Home Check Service** offers the most vulnerable people in East Sussex a full assessment of their home and how best to keep it warm; small preventative works, such as improving insulation or repairing boilers; installation of replacement boilers, central heating systems or home insulation, emergency temporary heating, and; advice on getting help with the cost of heating the home.



6. Other national and local measures

- **National** – Cold Weather Payment, the Warm Home Discount, Winter Fuel payment, Energy Saving Trust etc.
- **Local** – Your Energy Sussex, Green Deal and renewables, supported by District and Borough Council projects.

East Sussex

Winter Home Check Service

Nov 2015-Oct 2018

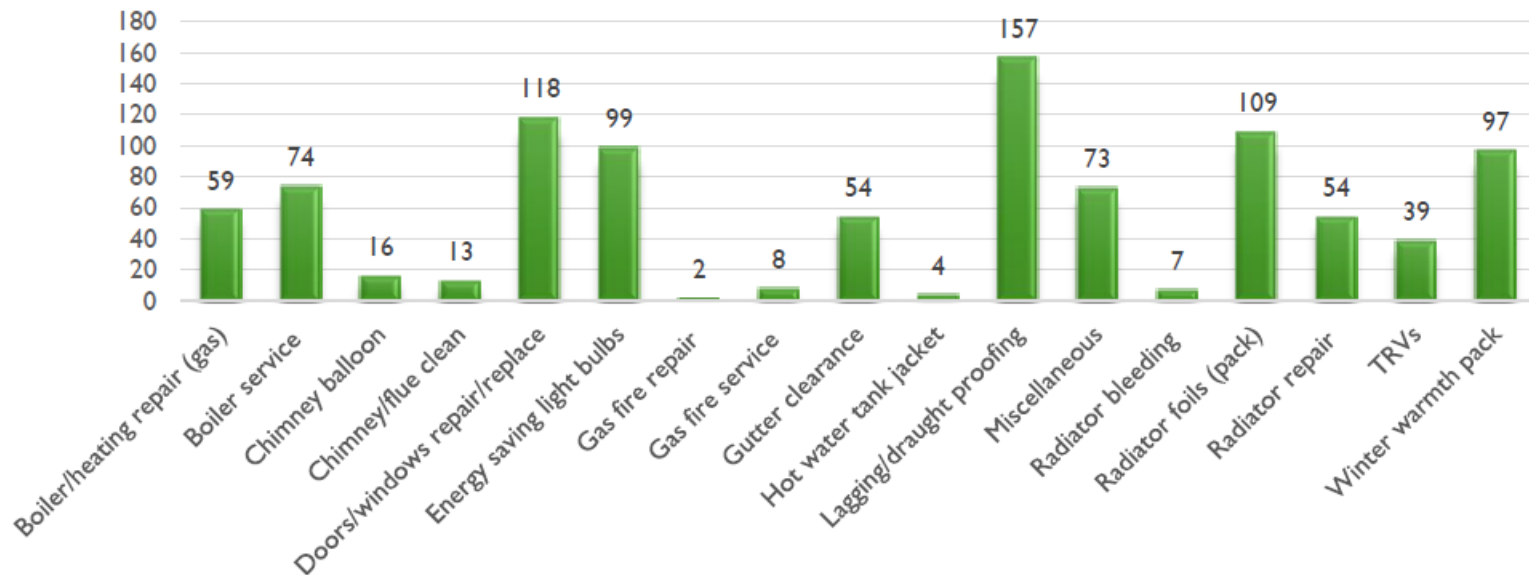
- Around 600 Winter Home Check visits delivered across East Sussex each year.
- Provision of thousands of minor heating and insulation measures
(e.g. draught-proofing, radiator reflectors, light bulbs, chimney balloons, winter warmth packs, boiler servicing/repair etc.)
- Over 400 major heating/insulation measures installed since November 2015, improving the ability of vulnerable residents to keep warm at home affordably.
- Made use of grants secured by East Sussex Public Health from National Energy Action (£697,200) and National Grid/Affordable Warmth Solutions (£154,000 worth of installations delivered, £286,000 remain to be delivered).
- Delivered on NHS Hastings and Rother CCG's Healthy Hastings and Rother project to deliver major heating and insulation measures in target wards of Hastings & Rother.

MEASURES

MINOR MEASURES INSTALLED – PHASE 3

The table and graph below show a breakdown of minor measures installed during Phase 3.

Total minor measures installed by type



Winter Home Check Service: savings

	£
Total Cost Savings (East Sussex)	£382,619.00
Average Household Savings*	£875.56

	Pre EPC Rating	Post EPC Rating	Average Uplift
Average	54.8	65.0	10.00
	E-	D	

	PRE EPC	POST EPC
(92 plus) A	0	0
(81-91) B	1	5
(69-80) C	60	189
(55-68) D	193	173
(39-54) E	108	49
(21-38) F	50	6
(1-20) G	10	1
Not energy efficient - higher running costs	10	9

(92 plus) A	
(81-91) B	
(69-80) C	
(55-68) D	
(39-54) E	
(21-38) F	
(1-20) G	
Not energy efficient - higher running costs	
	PRE EPC Rating
Average	54.8
	E-
	TO
	ALL
	R
	ES
	WH
	AVERAGE
	£
	*potential savings
	ca

NHS Hastings & Rother Clinical Commissioning Group Healthy Homes Programme

- In October 2016 NHS Hastings and Rother Clinical Commissioning Group established an 18-month pilot to fund installation of major heating and insulation measures:
 - Full central heating systems
 - Boiler replacement
 - Loft insulation/cavity wall insulation/floor insulation
 - Storage heaters
- 148 properties in wards with the highest number of fuel poor households (owner occupied and private rented)
- Initial installations were completed, further CCG funds identified and project extended to October 2018

Healthy homes in Hastings and Rother -

<https://www.youtube.com/playlist?list=PLchvctswfNgxh5rf5NKQ6CVHbkm3vk85k>

University of Brighton Evaluation Impact and legacy of the Healthy Homes programme – “it’s a life changing one”

“That cold spell we had with the snow when it got bitterly cold, to have that warmth when I needed it, to be able to put it on...the whole flat was beautifully warm. I think it’s the first time it’s ever been that warm, it’s been marvelous”. (B11, Central heating)

“The children are warm, which I suppose is probably the biggest thing”. (B5, New boiler)

Stakeholders reported a range of positive impacts on beneficiaries:

“The vulnerable have got heating and if they hadn’t...I don’t mean to overdramatise, but it could well have been the death of them”. (SH1)

“A lot of people have found that they’ve saved money because by replacing a thirty year old boiler with a really brand new efficient one they can have their thermostat set lower so it doesn’t cost them so much in fuel”. (SH7)

Al Spencer - Wadhurst

A 73-year-old musician, suffers with bronchitis and used to shiver his way through the winter in a home heated only by a wood burner.

“I used to suffer dreadfully with the cold and had to wear thermals, a thick coat and a woolly hat and have a blanket over my legs to try and keep warm. I’m a positive person but it made me really miserable.

“I was even thinking about moving house but now I don’t have to. It’s like a weight has been lifted off me and I’ve got a big smile on my face. I feel very lucky and grateful.

“To anyone who’s thinking about whether to have the Warm Home Check, I’d say go for it – grab it with both hands.”



East Sussex

Warm Home Check Service

The Warm Home Check service offers advice to **anyone** who struggles to afford to keep warm at home. It also provides eligible vulnerable households with a **holistic energy and fuel poverty focused home assessment**.

This can include:

- **advice** on how best to keep their home warm/reduce energy costs
- advice on **financial support** available to help with heating costs
- **minor home improvement measures** such as improving pipe insulation, draught-proofing, boiler service.
- subject to funding being available, the Service can also coordinate & source funding for the **installation of heating & insulation measures** available through schemes such as the government's Energy Company Obligation (ECO).

An emergency temporary heating scheme is also available.

Who is Eligible?

For the home visit element of this free service you need to:

Own your own property or rent it privately (in East Sussex) and have the owner's permission to do the work.

AND EITHER

- be on a low income* and be either diagnosed with a long term condition or living with a diagnosed disability

OR

- be receiving one of the following benefits: Child Tax Credit, Working Tax Credit, Universal Credit, Pension Guarantee Credit and/or Pension Savings Credit, Income Support, Income-based Jobseeker's Allowance (JSA), Income-related Employment and Support Allowance (ESA)

* Income thresholds depend on size of household.

 **keep warm and well**
...in East Sussex

Warm Home Check Service

If you struggle to keep your home warm, the Warm Home Check Service can help!

We offer advice and can help you to access support that's available. If you're on a low income you may also be eligible for a home check visit which includes:

- Advice on getting help with the cost of heating your home
- An assessment of your home and tips to keep it warm
- Small improvement works or repairs.

If you don't have mains gas central heating **but live in an urban area and are on a low income** then you could be eligible to have a fully funded gas central heating system installed. Apply for a **Warm Home Check** today!

Enquire online at: www.warmeastsussex.org.uk
Phone: 03444 111 444 or text WARM to 81400

£440,000 Warm Homes Fund* for East Sussex

- 100 new central heating systems for eligible residents in urban areas who do not currently have a heating system.

*Established by National Grid and administered by community interest company, Affordable Warmth Solutions, on behalf of National Grid.



How to Refer?

People can apply direct or be referred in the following ways:

- By webform through warmeastsussex.org.uk
- By texting WARM to 81400
- Calling the Citizens Advice ADVICELINE on 03444 111444
- Through any Citizens Advice office

THANK YOU!
Questions



Contact: ltrenchard@hastings.gov.uk

www.warmeastsussex.org.uk