

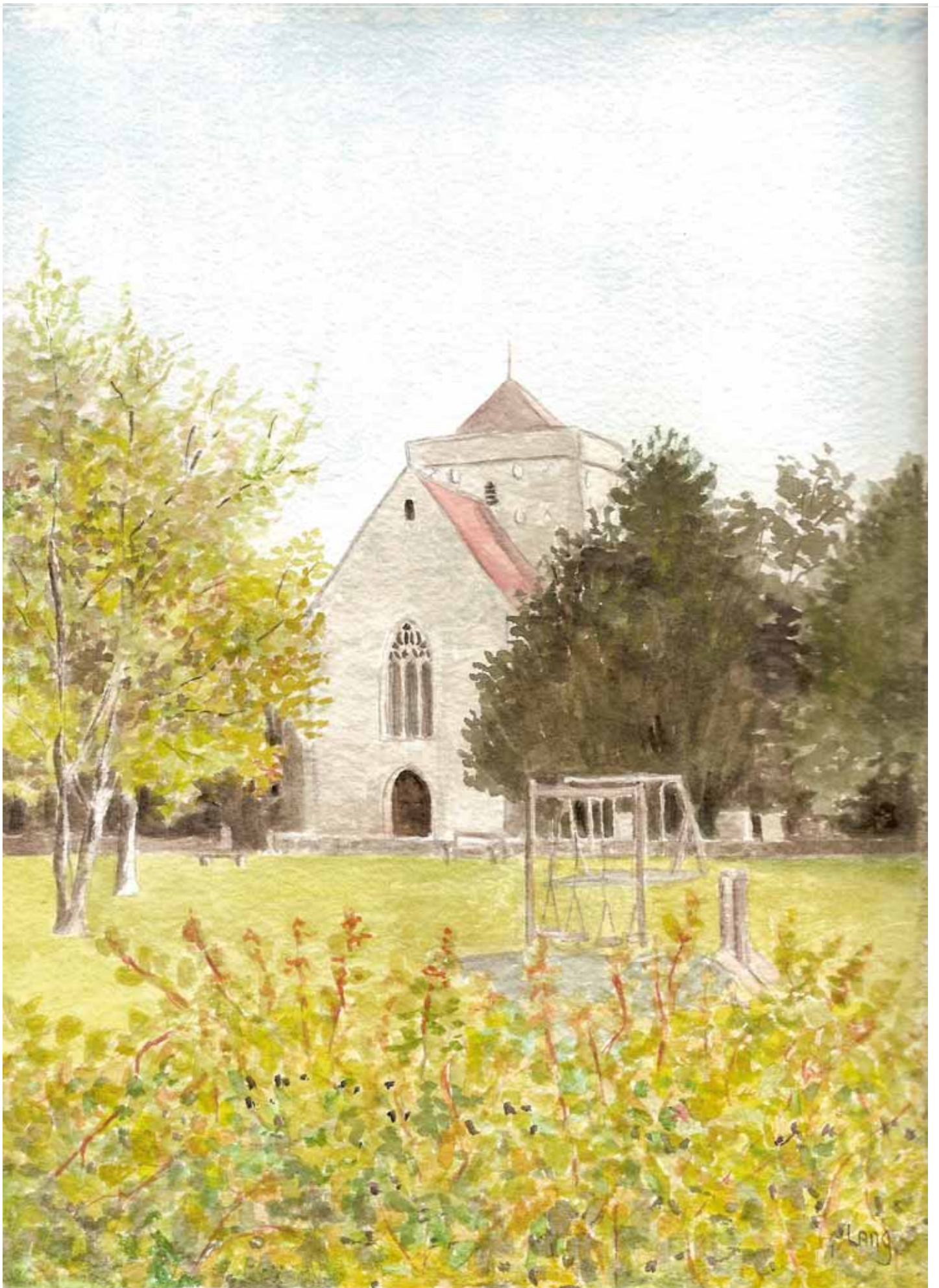
ETCHINGHAM



ACTION

PLAN

2007



Lang

FOREWORD

The Parish Action Plan process is a means by which our whole community can voice their opinions on what actions we wish to see taken in our local area in the future. Now that the plan is completed it highlights actions that could be taken by community members, may be used to influence councils and service providers and also act as justification of need when applying for funding.

It has been a fundamental principle throughout that we should work closely with our colleagues on the Etchingam Trust, with the intention of giving them every support possible, and in return their input has been most valuable.

INTRODUCTION

In November 2005 an informal meeting was convened to consider a local "Action Plan". It was attended by an almost equal number of Parish Councillors and local residents (volunteers), from which a committee was subsequently formed to steer the process through.

An outline timetable was drawn up which, with only minor amendments proved a remarkably accurate guide to the time-scale needed to complete the project.

Public meetings have been held, consultations carried out (with - among others - the Primary School), a questionnaire was circulated to all residents of the parish, the results of which were then analysed and are summarised in this report.

During the course of the project many comments have been made by residents. It has not been possible to include all of them, but they will be available to the Parish Council. Some 42% (294) of the questionnaires were returned, and this level of response provides the foundation for this report.

Actions that it is hoped will come about, as a result of the project, are summarised in the conclusion.

ETCHINGHAM TODAY & RECENT

HISTORY

In 1991 a Village Appraisal was carried out, which was a process not dissimilar to the compilation of this action plan. It contained – among other things – an excellent brief description of the parish as it was at the time; a two-part history of Etchingham from 1066-1851 and 1851-1945; reflections from 1945-1991; articles about the Parish Church, farming in Etchingham, and the natural history of the area.

It is neither practical, nor particularly relevant to reproduce these in this report, and they certainly could not be improved upon, but they give a very full picture of various aspects of life in the parish and are to be recommended.

There is also a great deal of information about the village both on the website and in the village general store.

There have been a number of significant changes in the period from 1991 to the present day. Notable among them are those mentioned below, but inevitably this is not a completely comprehensive list.

Perhaps the most momentous event was the flooding in 2000. It had a dramatic effect on many peoples' lives and numerous buildings in the village, including many houses, the village general shop and the church. Several feet of water filled the church, causing considerable damage, such as had never been known before in recorded history.

One result – direct or indirect - was the closure of the village general shop and, ultimately, the opening of the community store which, in itself, is a tribute to the parish and the ability of its residents to come together in time of crisis and make a real impact on village life.

Agriculture has always been an important feature of the life and work of the parish and the pattern of farming has changed during this time. Some of the changes, such as the increase in set-aside land, and the growth of new woodland on what was previously agricultural land, are a continuation of the pattern that was already in train in 1991, while others, notably the dramatic reduction in dairy farming, have been more recent. The trend towards diversification by farmers, including using their land for other purposes, for example, recreational use, has continued to gather momentum.

There has been some limited new building, including Orchard Close and Church Farm Close. The subject of further development is covered in the questionnaire results.

The disappearance of the village pub is a change which many regret, as was evident from the number of comments made, and many would like to see a new one take its place.

The closure of the shire horse centre at Haremere Hall has had an impact on the number of visitors to the village.

There have been some changes to the pattern of organised village events; some have continued to flourish, while others have not. An annual Arts Festival centred on the church has become an established and prestigious feature. The Etchingham & Fontridge Cricket Club, dormant since 1938, has been revived, with considerable success.

Despite these and other changes, in many respects the village of Etchingham and its surroundings have altered very little in the last 15 years. In some ways this no doubt adds to the attractiveness of the village and its life, but in others indicates that perhaps changes are overdue. There has been a great deal of effort put into the attempt to make possible the construction of a new Village Hall, which now looks to be in sight of a positive result and also involves the prospect of a new school. As will be seen from the survey results, these have the overwhelming support of the majority of the residents.

REFLECTIONS

Etchingam has grown up along a drovers' road which came from Hurst Green, down Burgh Hill through the village, down Borders Lane and on to Burwash. In the 1760's Turnpike roads were privatised to encourage their upkeep and Etchingam's main road became part of the Lewes to Hawkhurst Turnpike Co. During the Peninsular War, to facilitate the movement of ordnance and troops, Haremere Hill and the Straight Mile were built; Haremere Hill because the ordnance carts could not get up Burgh Hill. There were two toll cottages, one still exists at the bottom of Burgh Hill, the other was on the corner of Oxenbridge Lane. In the 1960s the toll cottage in the village was demolished, the road straightened and Park Farm houses built. At one time there were five public houses and a temperance house in the village; the bottom shop (as the stores were always called) and up in the High Street a post office, bakery, greengrocer and a telephone exchange. Around the railway there were coal-yards.

Etchingam has indeed had a rich history and details can be found in the Etchingam books in the Community Stores.

Jill Copland

CHANGES 1991-2006

LOCAL FLORA and FAUNA



In this sixteen year period, we have experienced much milder winter seasons and some extremely hot summers, and the expression "Global Warming" is now in almost daily use.

The area of Etchingam parish is much larger than the village proper, and covers some 2,555 acres. Much of it is still wooded, and there is little – if any – change in the make-up of the woodland, from the varieties listed in the 1991 appraisal. Likewise, the

undergrowth has changed very little, although some of the plants that were fairly abundant have become rare now, among them: purple helleborine, lesser butterfly orchid and yellow archangel. Low rainfall and summer droughts may be the reason. This also applies to the many varieties of local fungi; during the 1960's and 1970's hedgehog fungus was found almost every year, as were chanterelles, both of which now seem to have completely disappeared. Most of the boletus varieties, including cep (penny bun), are abundant in most years, as

are the bovistae, e.g. giant puffball,¹ and lycoperdon pyriforme, the latter having a particularly strong mushroom flavour.

I grew up learning about mushrooms and fungi in general from an early age and limit myself to what I know to be safe. Blewits, both field and wood, did not grow where I grew up but, as they happen to be unmistakable, and one can find them around here in late Autumn and early Winter, I have enjoyed them.

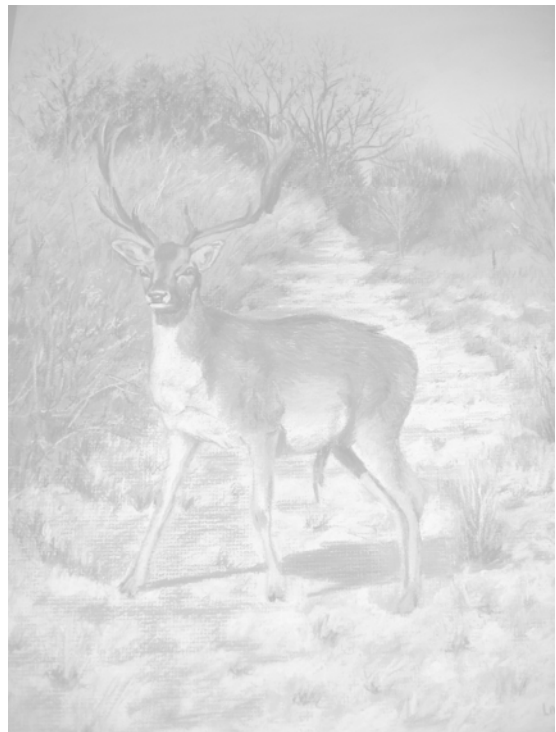
Birds and animals are bringing new life into formerly strictly managed single-grass meadows which have now been allowed to go back to nature and are beginning to show patches of local wild flowers and herbs again, seeded naturally. One of the almost forgotten sub-shrubby wild flowers has recently increased locally: Dyer's green-weed, which was used for dyeing textiles in green and yellow shades.

Bird life is still abundant, although some species have become rarer, including partridge, lapwing, snipe, woodcock, lesser spotted woodpecker, willow warbler, redwing, fieldfare, waxwing, brambling, hawfinch, corn bunting, gold-crest and fire-crest. Some that would have previously been considered very common have shown a decline in numbers, for example starling, house sparrow, swallow and house martin, blackbird and thrush.

Others however have increased in numbers, including kestrel, sparrow-hawk, buzzard, and nightingale. On a local organic farm, coot and little grebe have recently reared offspring. Peregrine falcon, hobby and red kite have been seen in the locality and little owls have re-appeared after several years' absence.

We still have a rich list of local mammals. Deer have increased: fallow, roe and some muntjac are now seen over the whole of the parish. Hares have continued to decrease, and moles likewise (due, no doubt, to the heat-waves of recent summers). Otherwise there have been few changes in recent years.

Fish stocks continue much as before in the many ponds in the area and the local rivers, and brown trout have increased slightly in the Limden. Reptiles and amphibia also abound, despite some of the shallower ponds tending to dry out in drought conditions. Great-crested newts, an endangered species, are still to be found here.



The ponds are also important to the continued abundance of many insects, including several species of dragonfly and damsel flies. The common wasp has declined in numbers this year; it is too early to say whether this is a continuing trend.

We also have a remarkable number of moths; Mrs Caroline Moore (a keen and active lepidopterist, concentrating on moths) has recorded no less than 486 varieties.

Ilse Baker

NOTE: Since writing this item, Ilse Baker sadly died (on the 3rd December 2006), and will be greatly missed.

THE VILLAGE

Since the parish appraisal in 1989/90 Etchingham has seen many changes. Some of the items flagged up in the appraisal as key issues are still unresolved – the traffic through the village seems to have got worse; the station surround is still a mess and unfortunately we have lost the pub. However, other areas have improved; many respondents identified a need for more additional homes, especially starter homes. There has been a significant amount of new development in Etchingham since 1990, including Orchard Farm and the Orchard Close developments which have given the village additional houses, including starter homes. Overall the number of dwellings in the parish has increased from 248 in the 1981 census to 322 by the 2001 census – a significant growth, which also includes houses in the outlying areas of the village and some conversion of larger houses into flats. In 1989, many residents complained about the standard of the electricity supply – there were many power cuts: this seems to have improved over the years since then. The former shop run by the Mills was not developed then and was seen by many as an eyesore – this has since been developed by Ellis Builders and is now part of Bracons.

In 1989, no-one identified flooding as a problem – this is an obvious change with the shop, the church and a number of houses being flooded in 2000.

In the appraisal many respondents identified positive reasons for living in Etchingham. Many of these positive things about living in Etchingham are still present. The attractive surrounding countryside is still largely as it was in 1989; the school goes from strength to strength; the Church is still one of the most interesting in Sussex and the Queens Gardens has been improved with additional childrens' play equipment. The appraisal identified a strong sense of community in Etchingham, with a significant number of local societies and clubs in action; this has continued with 2006 seeing the revival of the village cricket team.

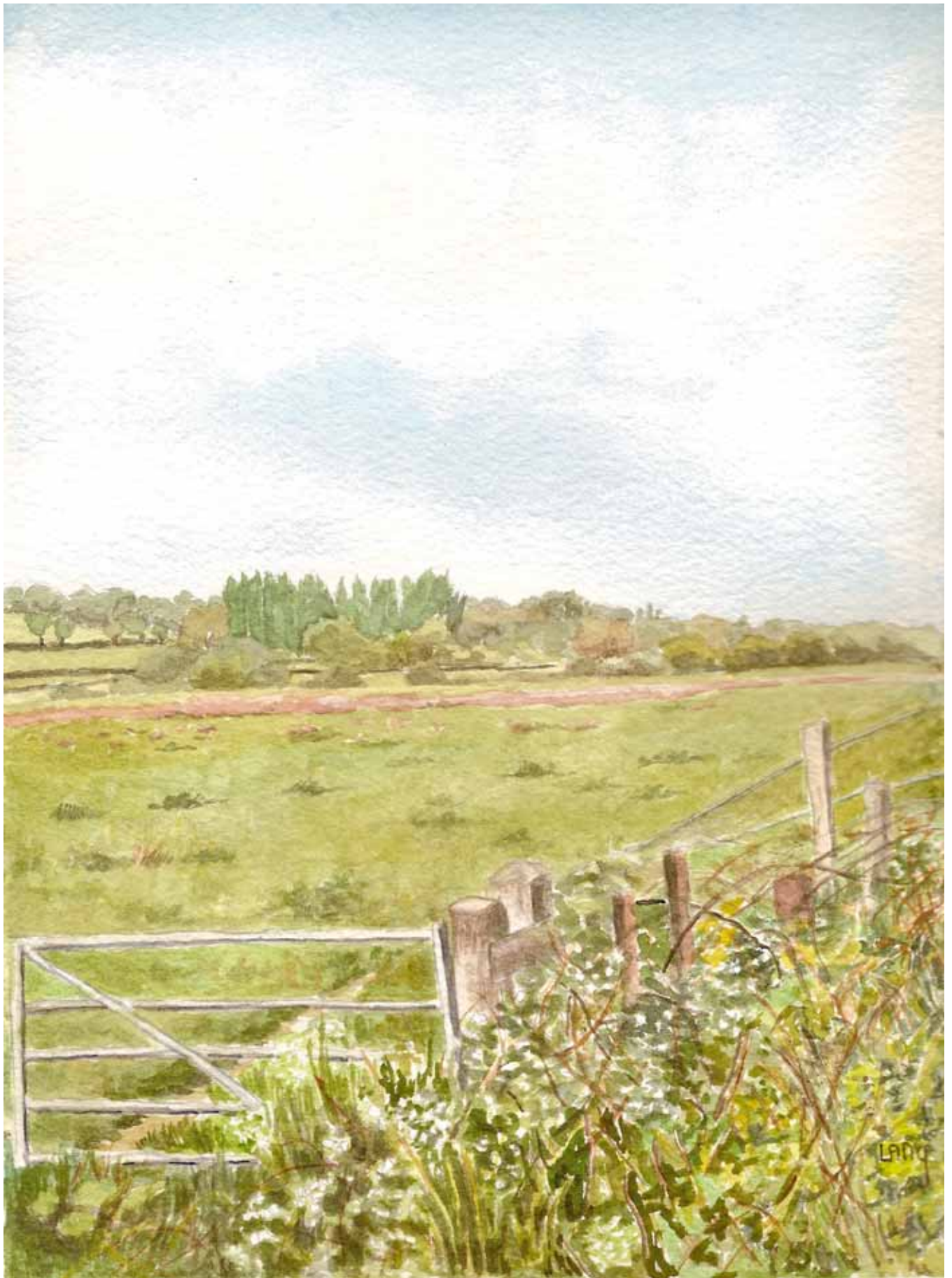
Frank Brophy - Chair of 1989/90 Village Appraisal

RESULTS OF THE QUESTIONNAIRE & CONSULTATIONS

There follows a summary of the answers to the questions contained in the questionnaire. They are shown mainly in the form of a percentage of those who answered a particular question, because in many cases questions were not answered by all respondents, with the result that simple numbers could often be deceiving. Notes show those instances where either a significantly large or small number of answers were given, all in an attempt to demonstrate the significance (or otherwise) of the response. Where there were several similar comments on a particular subject, a summary has been provided and in this respect account has been taken of slips placed in the suggestion boxes, as well as the questionnaire itself.

A specific consultation was carried out at the Primary School, the results of which are also summarised. In addition a separate attempt was made to target those between primary school age and adulthood, with much less success, the results of which are also summarised separately.





LAND

Demographics

The main conclusions to be drawn from answers in this section are:

- The age-spread is probably distorted by the fact that people in some age-groups are more likely to respond to a questionnaire than others, but from the answers to the question “age of those living in your house” 22% of the population is over 65, 20% are under 21.
- 73% have lived in the parish for less than 25 years and nearly 50% less than 10 years.
- The population geographical groupings are much as could be expected, the main ones being:
 - Village centre 39%.
 - Burgh Hill, Sheepstreet Lane, Oxenbridge Lane 13-14% each.
- Places of work:
 - 23% local.
 - 26% within 10 miles.
 - 38% commute – 35% of which go to London.

Housing

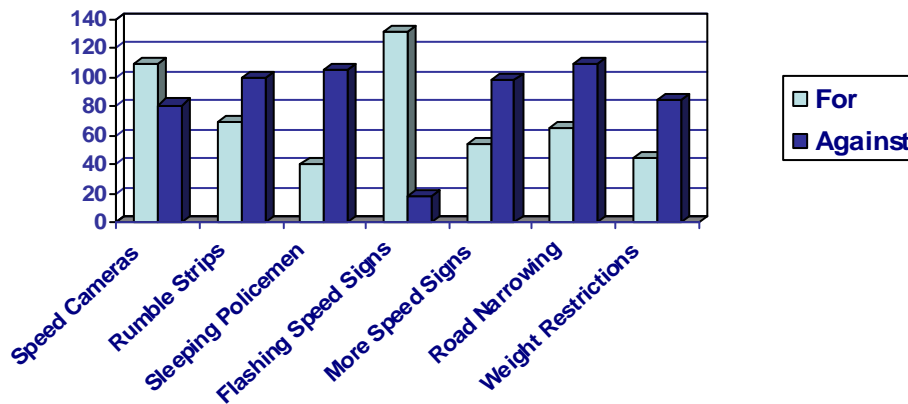
- 60% felt there should be no more housing in the village.
Note: Virtually everybody answered this question.
- 86% felt there should be no more development on fields adjacent to the village, excepting the proposed Village Hall/School development and the housing connected with it.
Note: Virtually everybody answered this question.

Comments:

- Of the small number in favour of further housing, the majority favoured the provision of affordable housing, over other kinds.
- 81% felt sufficient attention is given to preserving building in the parish, that warrant preservation.
Note: There was a strong response to this question.
 - 84% favoured a parish design statement.
Note: Virtually everybody answered this question.

Road Safety & Parking

- 88% perceived a problem with speeding in the village centre.
Note: Virtually everybody answered this question and there were many comments, indicating grave concern about road safety in general.
- 70% perceived a problem with parking in the village.
Note: There was a heavy response to this question and there were many comments, indicating the worst affected area to be the High Street.
- Comments referred especially to commuters not using “the expensive and dangerous station car park”. The response to the questions about the car park, however, did not entirely bear this out: 65% considered it safe and well-lit, but only 38% use it.
- Residents-only parking permits: 75% against.
- 81% thought there should be traffic calming measures.
Various measures were suggested on the questionnaire.
Flashing speed signs and speed cameras were the main preferences.



- 58% favoured a zebra crossing. The majority support was equally divided between the area around the Post Office and that near the Queens Gardens.
- 78% opposed street lighting. *Note: Virtually everybody answered this question.*



Walking & Cycling

- 45% felt that measures were needed to improve cycling.
- The main suggestion was that there should be a foot-path/cycle-path between Etchingam and Burwash. Much less support was shown for similar to Hurst Green.
- 60% felt the footpaths and verges are well-kept.
Note: *Virtually everybody answered this question.*
- Footpaths & bridleways:



71% said the footpaths were adequate.

56% said they were well-marked.

68% said there was sufficient access for horse-riders.

68% said there was sufficient access for dog-walkers.

Note: *There are more than twice as many dog-walkers as horse-riders.*

Comments:

Some concern was expressed about overhanging hedges and overgrown verges.

There were many and varied comments under this section, indicating a high level of general interest in these subjects.

There was overwhelming support for a "walking-bus" through the village to the school.

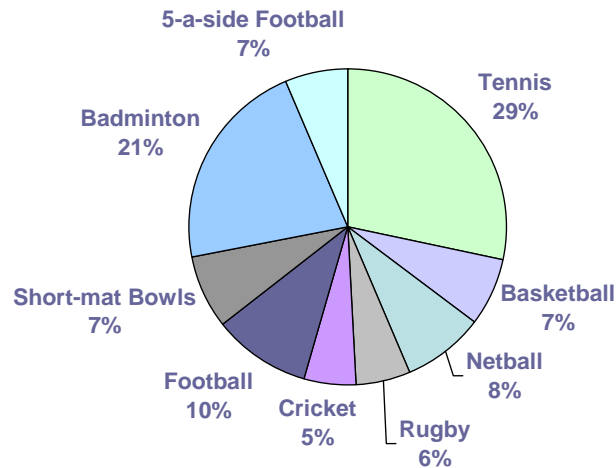


Etchingham Trust for Sports & Recreation

- 80% indicated support for the Village Hall & School proposals.

Note: *Virtually everybody answered this question.*

- Suggestions were invited for sports and recreation facilities to be provided; in order of preference as illustrated by the following chart.

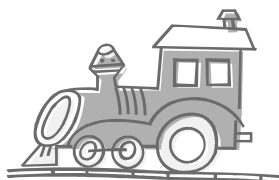


Transport

- 28% regularly use Etchingham station and 64% use it occasionally.
- A very small number said they found difficulty getting to medical appointments.
- There was a most encouraging response to the appeal for help with transport for those in difficulty, with 31 saying they would be willing to drive.

Comments:

There was some support for an increase in bus services, and for maintaining train services without reduction.



Shops & Services

- 84% thought there should be a village pub.
 - 89% were aware of the Etchingham Social Club.
 - 22% stated that they are members of the Club.
 - 50% were in favour and 50% against a cash-point in the village.
 - Strong support was expressed for the village shops: the Community Stores, the Post Office and the Butchers.
 - Use of shops and services outside the village is heaviest in Burwash, followed by Orchard Farm Shop, Hurst Green and Ticehurst/Heathfield.
 - 71% expressed satisfaction with the mobile library service.
 - For medical attention, the majority attend the surgery in Burwash (201), followed by Hawkhurst (100) and Robertsbridge (13).
 - 27 dentists were listed as being used, in various surrounding towns and villages. Opticians and chiropodists were also many and varied.
 - 73% favoured more businesses being encouraged to come to the village.
- The suggestions were many and varied, with the only one outstanding preference being for a pub/restaurant/take-away.
- 61% felt there should be a public toilet in the village.

General

The purpose of this section of the questionnaire was to encourage people to express thoughts about the village on matters not covered elsewhere. There were many and varied ideas put forward, but no one with any significant degree of general support, other than some points already covered under other sections.

Security & Policing

- 59% were aware of the presence of Police Community Support Officers.
- 74% felt there should be more policing, in the form of, in order of preference:
 - policeman on the beat, at night &/or on a bicycle 39%
 - more visible police presence, but not necessarily cars 26%
 - appointment of a village policeman 11%
- There is perceived to be a problem in the parish with:
 - Vandalism 40%
 - Graffiti 23%
 - Burglary 15%
 - Car Crime 12%
- 87% felt safe in the parish generally.
- 65% favoured the flood-lighting of the church to discourage vandalism.

Note: There was a strong response to this section in general.

Environment and Recycling

- 81% felt there should be a re-cycling point in the village.
- The majority favoured the far end of the station car park.
- 50% were in favour and 50% against a community composting facility.
- 77% felt sufficient was being done to protect verges with wild flowers.
- 57% felt the drainage in the parish to be less than satisfactory, naming principally Bracon's old yard, Church Lane and the Station, and citing poor gully and drain maintenance.
- 66% felt the flood defences in the parish to be less than satisfactory.
- 74% felt the village to be sufficiently tidy.
- 48% favoured consideration being given to increased use of solar power; 37% wind power and 12% hydro power.

Comments:

More litter bins.

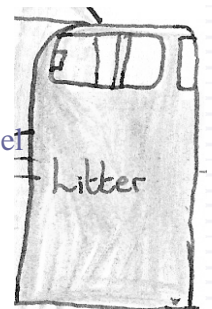
Of those who felt untidiness to be an issue, the problems mentioned were litter, especially outside the community shop, Queens Gardens and Youth Shelter; and, to a more limited extent, dog-fouling and verge damage.

Eyesores attracting significant mention were, in order of numbers of comments:
Bracon's old yard and the coal-yard.

Note: There was a strong response to this section in general.

Comments:

There were many and varied comments under this section, indicating a high level of concern about the environment.



Activities & Facilities for Young People



- 72% felt there should be a Sunday School.
- 62% felt there should be more play facilities in the Queen's Gardens for toddlers.
- 67% favour a breakfast or after-school club at the school.
- 8% expressed willingness to help with the youth group (a total of 21 people).
- Sports pitches, indoor sports facilities and larger play areas were all supported, and many and various activities were suggested, but none attracted outstanding support.

Note: *There was a strong response to this section in general.*

Facilities for Older People

- 37% anticipate requiring special needs facilities in the foreseeable future.

Note: *There was a strong response to this question.*

- 52% felt there were not adequate facilities available; 33% answered "don't know".

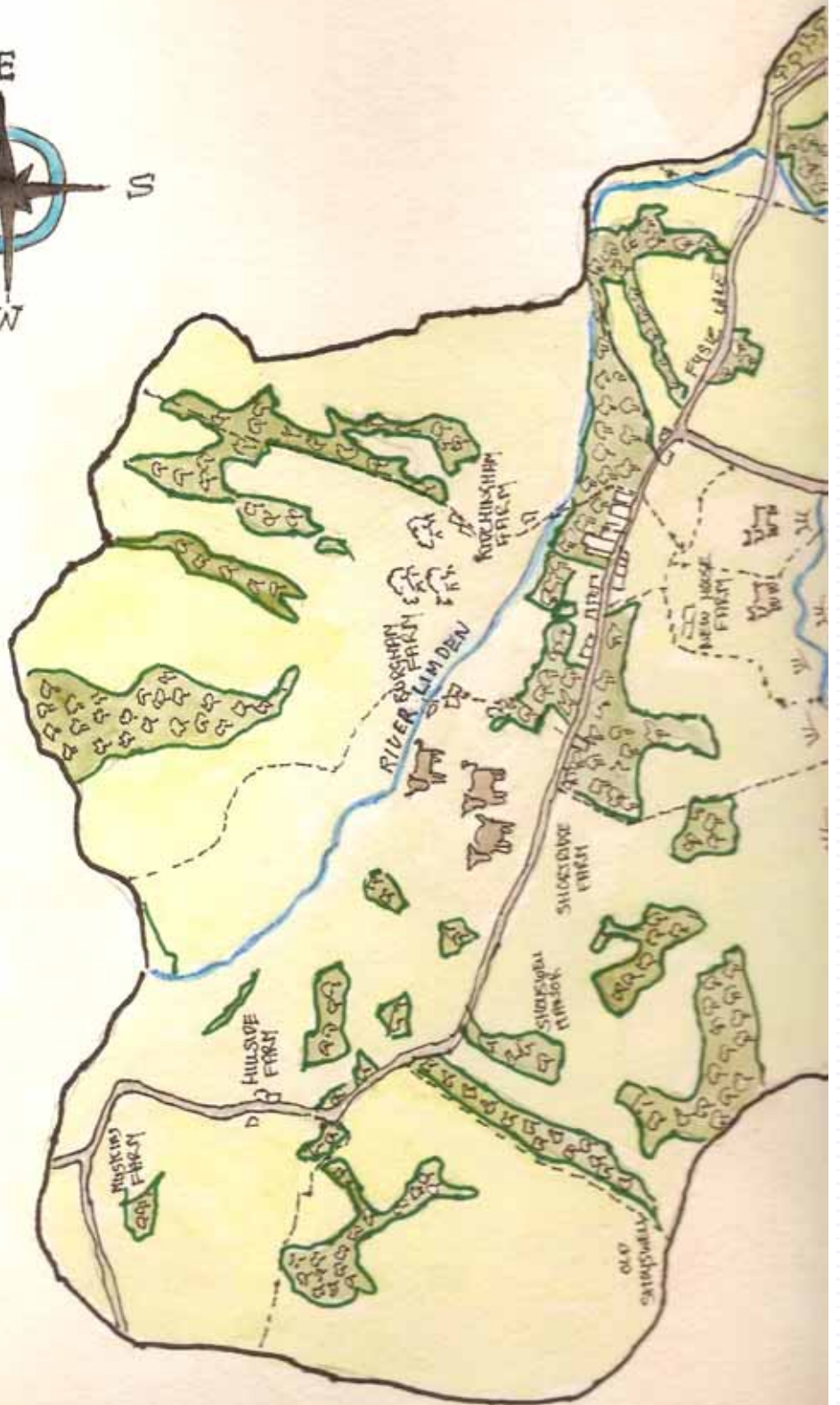
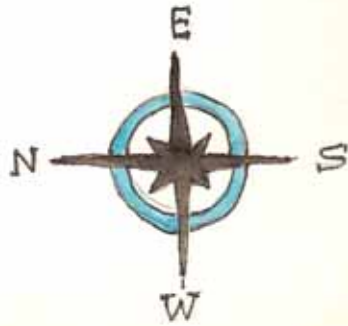
Note: *There was not a strong response to this question.*



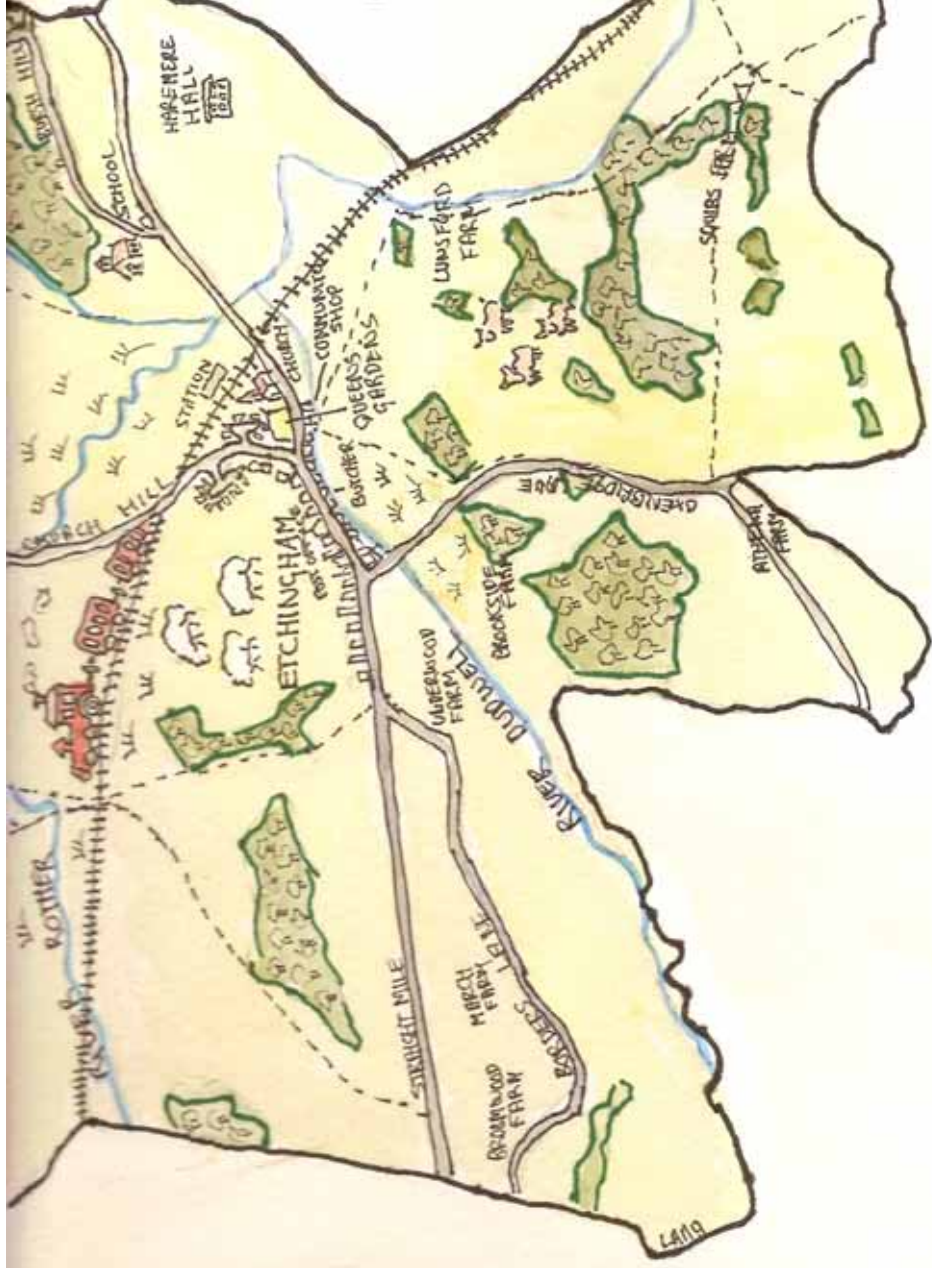
Comments:

There were many and varied comments under this section, notably concerning transport to facilities that are available and the need for a luncheon club.

THE PARISH OF



ETCHINGHAM





Results of the Primary School Consultation

Initially the children were given a sheet with 9 images of Etchingham. They were the Church, Youth site, open spaces, litter, shop, playground, traffic, activities and transport. They were asked to choose two positive views and one negative.

On the positive side the playground was most popular (65%) with the shop second with 59%.

On the negative side, over 60% of children complained about litter and over 20% about traffic.

The children were then given the opportunity to express their own interests either in written or pictorial form.

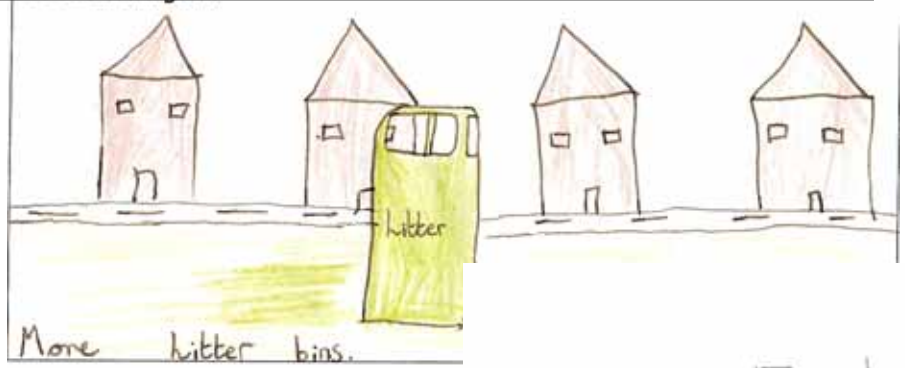
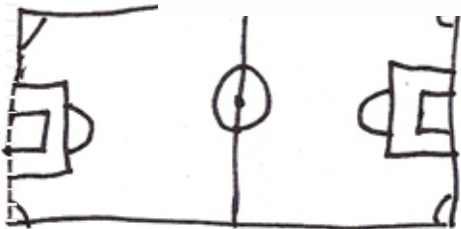
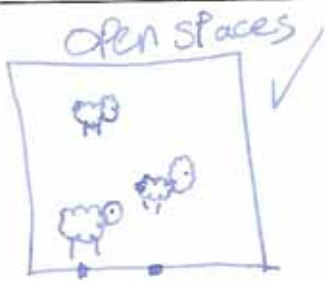
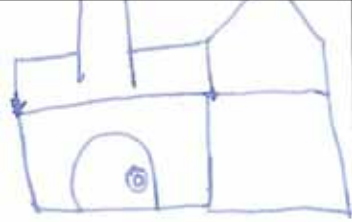
Amongst the sensible suggestions put forward were: more litter bins and a sponsored clean-up. There was a request for signs to say those dropping litter would be fined. There was also a call for a recycling point.

In other areas there was a strong preference for a swimming pool, followed by more play equipment (including a sandpit), a football/rugby pitch, an archery range and tennis courts.

The children expressed an interest in making the village more attractive by planting more flowers. There were also several calls for a new primary school and a community college!

Among the more creative suggestions were: a Burger King, a take-away restaurant and café (to replace the youth site next to the church), a Laser Quest centre, a tuck shop at school, a temporary ice-rink in the winter, dolphins, a little chocolate factory, an airport and a parent drop-off centre!

This is a sample of drawings done by the primary school children to illustrate what they would like to see changed in their village.

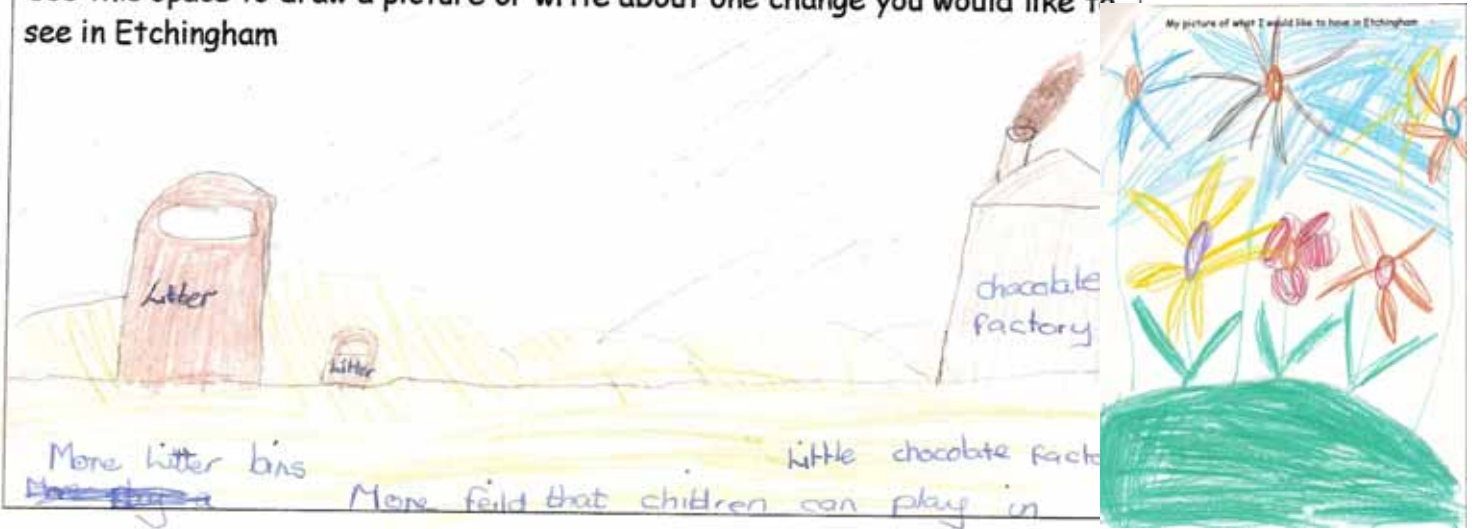


this space to draw a picture or write about one change you would like to see in Etchingham



a full size football pitch

Use this space to draw a picture or write about one change you would like to see in Etchingham



Results of the Secondary School Consultation

A questionnaire was designed to give the children and young adults of Secondary School age a chance to express their views and opinions on life for them in Etchingam and how we could improve on what we have or do not have. Youngsters on the three school buses that pick up in the High Street were asked to take part, and eight forms were returned.

When asked what mattered most to them, transport and facilities came top of the list, closely followed by things to do and only two thought places to meet were important.

All but one used the station either regularly or occasionally.

In answer to the question “what annoys you about the village?” traffic-related problems, speeding cars, no pedestrian crossing and the road in general featured heavily. Boredom and “nothing to do” was also an issue.

Every person had a different idea on what improvements were needed, including the introduction of mountain bike jumps, a pedestrian crossing, an activity group and the need to do something about the car park opposite Bracons.

Only one person used the youth shelter; reasons for this were the location and older teenagers making it difficult for the younger ones. Two people mentioned the park as a place where they spent time, while four said they did not socialise in and around Etchingam at all.

Finally, they were asked which of the following activities or projects would work and whether they would use them, with the number of positive responses as shown:

Youth Club	2
Art Projects	4
Music Projects	3
Theatre/performance Projects	4
Sporting Activities	5 (<i>with mention of netball and swimming</i>).
Horse riding	3
Cycling club for all ages	1

Conclusions of the 2007 Action Plan

After the completion of the Action Plan the following conclusions have emerged.

There should be **flashing speed signs** installed at both ends of the High Street in an effort to slow down the traffic. This will be put in place in the coming 9 months to a year.

=====

A Pedestrian Crossing is also a priority but, due to cost, this will be a lot more difficult to put in place in the short term. We expect this to take a minimum of 2-3 years.

=====

There was a desire to have a **footpath between Etchingam and Burwash** to give a footpath/cycle track between the 2 villages. This is being studied by the Environment Committee and it is considered that it may be possible to join existing footpaths to create a link. It is expected that this could be achieved within a year or so.

=====

A Walking Bus to and from school was considered to be a welcome improvement and the school are being encouraged to study this to see if they and volunteer parents can put one in place. It is expected that this could be in place by the beginning of the next school year.

=====

There is continuing strong support for the **Etchingam Trust for Sports & Recreation** and their efforts to put in place a new Village Hall, a new school, community facilities and enabling housing. The 1st of many fundraising events will be held this year to demonstrate that the Parish is behind this idea so keep your eyes open in the local shops and get on board!

=====

A Parish Design Statement also got a high level of support. This is a document, prepared by local people, that describes the distinctive character of a village, its buildings and surrounding countryside. A PDS should supplement local planning guidelines by giving more detailed guidance on appropriate designs for any developments within the village area. Design refers to the size, shape, scale and choice of materials used, all of which local people are uniquely

placed to describe. These should be used by householders, developers and the local planning authority. Development can mean major new housing projects or just small-scale additions and alterations. The document is prepared by local people in consultation with the local planning authority. This will be put in place by a small team soon to be formed.

=====

Due to the high number of comments suggesting an increased Police presence would be welcomed, we interpreted this as a desire for **a Special Constable**. It would be unrealistic to expect the Police to be putting a Policeman back on the beat in our village but a local volunteer could be just the thing, come on, we know you're out there. There is substantial training and support from the Police available so why not come forward!

=====

There is support for Network Rail to be encouraged to **renovate the coal-yard** and possibly turn it into a recycling point. If it is not feasible in that position one could be situated at the far end of the car park on the east side of the railway line. It is envisaged that this could take some time to achieve due to red tape. Do we have someone out there who would like to take on Network Rail? We need a real tenacious character!

=====

Since the flood in 2000 some progress has been made in respect of **flood defences**. This is highlighted as an area which needs further action so again, we need to recruit from outside the existing volunteer network. Is there anyone out there with a strong feeling for the environment who would like to take this on? It could be done in conjunction with the next item.

=====

There will shortly be a **group set up to study eco-friendly power sources** in the Parish. If this attracts you, please get in touch. It is hoped assuming we can put the people in place, that a report should be possible within 2 years.

=====

Addressing the problem of litter around the village, this is being studied by a volunteer who is shortly to start doing regular litter collection. We would hope to be able to augment this with occasional **village clean-ups**, the support for which is quite strong.

Many people wanted to see a new **Sunday School**. This is being explored by the Church and the School to see what form this might take, where it would be held and when. It is likely to be started by the coming Easter assuming there is volunteer support so if you value the children getting some religious education, this is your chance!

=====

A working party of the Environment Committee is putting together a proposal to improve the **play facilities in the Queen's Gardens for toddlers** amongst other things. It expects this to be in place during 2007.

=====

After school clubs are already a feature of Etchingham School but a popular suggestion was for **a breakfast club**. This is being studied as this goes to press.

=====

A luncheon club for the elderly is being looked into by the Church and the School as well and it is hoped that with a good level of support from the community this could be in place by Easter.

=====

Church floodlighting is another area to be explored to see if it might be possible. This would have to get authority of the Diocese and may take some time so we are not putting a timeframe to this.

After research through the School the expected rebirth of **the Youth Club** is a strong possibility with at least 15 children wanting to come, all that is needed now is a Leader. Recruitment will be for a professional to take this on unless you know someone. We would hope that by the springtime we will have everything in place to restart.

=====

A Public toilet was considered another popular addition to the village amenities. This is being studied by the working party for the Queen's Gardens Improvement Project. It is more likely to be a facility available with keys though the shop rather than the true understanding of a Public toilet. The expected timing for the completion of this project is during 2007.

=====

Many people wanted to see ***a pub back in the village***. This at first would appear to be a distant dream. But if we could get Network Rail to give up the station for a community project it is sure there are plenty of volunteers to do the work and with fundraising this could be made a reality. The person who comes forward to discuss the coal-yard issue with Network Rail would be the logical person to follow this up as well.

=====

The young people of the Parish showed interest in having ***a music and drama group***. Is there someone out there with the energy to form one? If so, the Parish Council would be happy to consider some financial help.

=====

The last point that we took from the Action Plan was a desire to ***increase the amount of businesses in the village***. This is a thorny issue because of the lack of suitable property. But there is nothing to stop us seeing if there are some possibilities and some encouragement that could be given for future business expansion in the Parish.

As you can see from this report, there are many areas which are crying out for people to help.

This Action Plan, although initially motivated by the Parish Council is a Community Action Plan. If you, the community, do not take an active role then many of the things identified through the questionnaire as things the Parish wants to see happen just won't take place.

It is your Action Plan, take ownership!

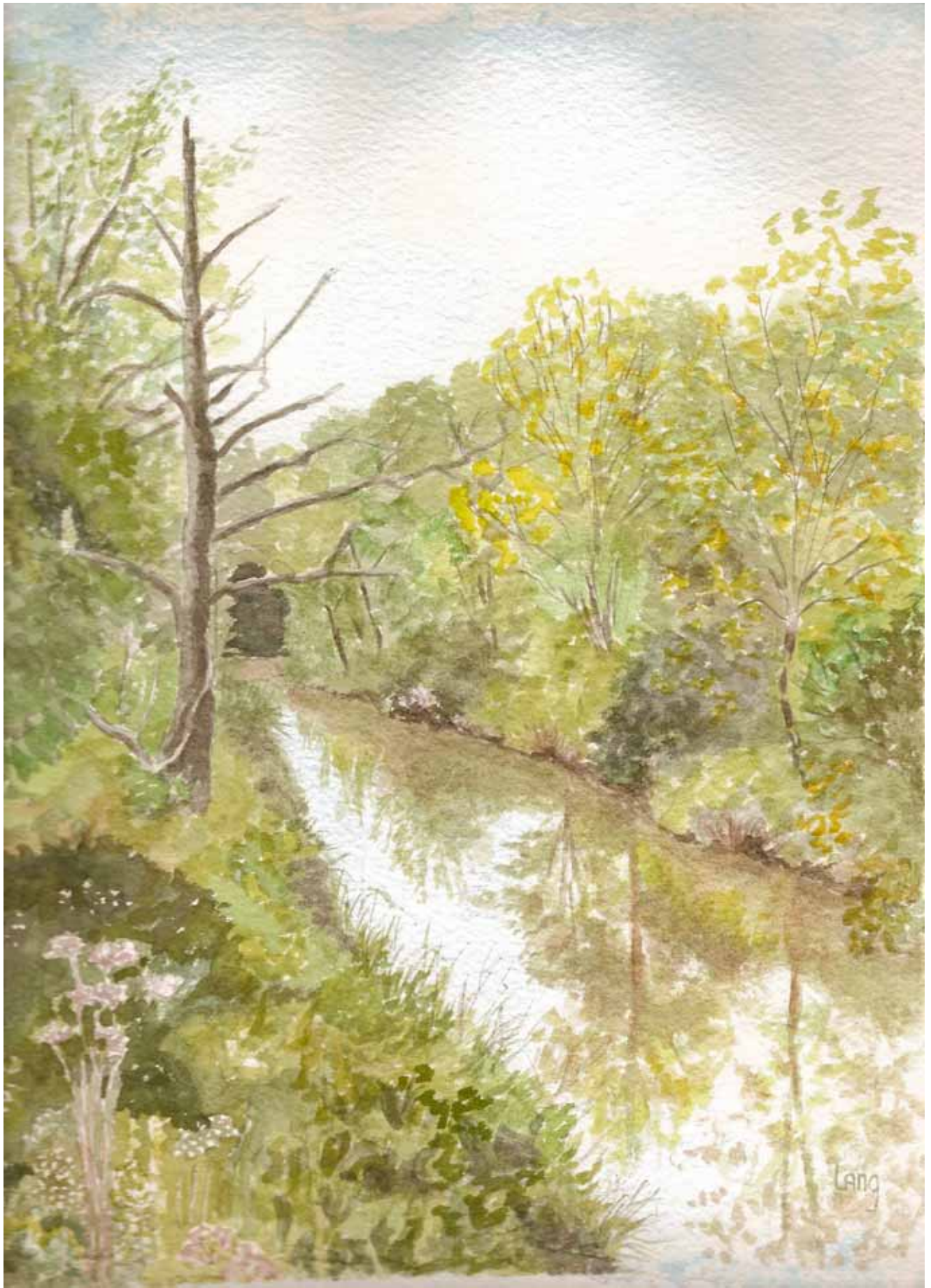
You can contact the Parish Clerk if you are interested in getting involved on 819122 or you can speak to Adam Jacobs on 819404 who will be happy to answer any questions and guide you into your particular area of interest. Whatever subject you choose, you would not be alone!

PLAN OF ACTION 2007-2012

ACTION	WHY	HOW	WHEN
Flashing speed signs at each end of the village	81% felt traffic was calming necessary	The Parish Council is following this and is precepting £6,000 to enable flashing speed signs to be erected	It is hoped this can be done in 1-3 years
A Pedestrian Crossing	58% wanted this as an added traffic calming measure	Enquiries to Highways to establish the best way forward This item needs someone to take it on	Funding to be acquired 2-4 years
Footpath between Etchingham and Burwash	Main suggestion in the Walking/Cycling section of Questionnaire	Idea to link 2 existing footpaths between the villages This item needs someone to take it on and report to the Environment Committee	This could possibly be done within a year or so
Walking Bus	Overwhelming support for a Walking Bus to School	A volunteer group needs to be put together by parents	If parents help - by the beginning of next school year
Support for Etchingham Trust for Sports & Recreation	80% of responders wanted to show support for the Trust	Fundraising events to start this year ETSR along with any volunteers	Ongoing from 2007 until the Village Hall is built
A Parish Design Statement	84% favoured a Parish Design Statement	This item needs someone to take it on	1-2 years
Special Constable	74% felt we should have more Policing	A volunteer with support from the Police. This item needs someone to take it on	1-2 years
Renovate the Coal yard	81% felt there should be a recycling point and this site as an was identified eyesore	Contact needed with Network Rail to make progress This item needs someone to take it on	Ongoing from 2007

ACTION	WHY	HOW	WHEN
Flood defences	66% felt flood defences to be inadequate	Environmental volunteer group to study. This idea already has support but others will be welcome to join	Report if possible within 2 years.
Eco-friendly power sources	Strong positive response to studying eco-friendly power sources both for families and community projects	Environmental volunteer group to study as with above item, this already has support from the same people but others welcome to join	Report within 3 years
Village Clean up	Litter around the village was highlighted in the Primary School report and in the questionnaire	A volunteer has come forward to walk the village combined with occasional village clean-up events	Regular monthly monitoring, coupled with special events
Sunday School	72% wanted a Sunday School to be started	The Parish Church and the Primary School working with volunteers This item needs someone to take it on	It is hoped to start by Easter if all is in place
Play facilities for toddlers in Queens Gardens	62% felt there should be more play facilities for toddlers	Queen's Gardens Community Project has including this in its brief a working party has been set up by the Environment Committee	It is expected that all will be in place by 2008
Breakfast/After School Club	67% favoured breakfast and after-school clubs	These could be run at the school or playgroup by parent volunteers	It could be in place by the beginning of the next academic year
Luncheon Club for the Elderly	There was mention of a need for a Luncheon Club	Food could be organised at the School, as long as transport of it to the Church and volunteers to serve and clear up could be put in place. This service would be provided by the School Cook, The Rector and helpers This item needs someone to take it on	It is hoped this could start by the beginning of the next school year

ACTION	WHY	HOW	WHEN
Church Floodlighting	65% favoured floodlighting of the Parish Church to discourage vandalism	The Rector and the Diocese would need to see if funding was possible for this project	Funding needed Ongoing from 2007
Youth Club	More than 15 youngsters would attend Youth Club if it existed	Etchingam and Burwash are co-operating on recruiting a professional to lead their respective youth clubs in the Spring of 2007 Adam Jacobs and Sue Westbrook	Spring/Summer 2007
Public Toilet	61% felt there should be a Public Toilet in the village	It is envisaged that a toilet with group access to a key is more achievable and this is part of the Queen's Gardens Community Project plan currently in work QGCP Team	It is expected that all will be in place by 2008
Village Pub	84% wanted a village pub to re-open	A distant dream, perhaps, but if the station building could be wrested from Network Rail and we had a gritty volunteer ready to organise the project from start to finish, then just maybe - it could be a reality People are needed to work on this project	This year, next year, sometime, never!
Music and Drama Group	The teens of the Parish were interested in a Music and Drama Group	Realistically, they won't form this themselves but with enthusiastic adults, maybe something Interesting could take shape This needs someone to take it on	2007/8
Increased business activity	73% favoured more encouragement to bring new businesses into the community	This needs someone to take it on	Ongoing from 2007



ACKNOWLEDGEMENTS

We would like to thank all those who have contributed to the work in producing the 2020 Action Plan. Local shops and businesses have helped in various ways, for example, by sponsoring the project, taking up advertising space, and agreeing to display notices, suggestion boxes, etc.

The 2020 Action plan committee was an informally constituted group of volunteers.

Those listed below have attended one or more meetings from November 2005 to the date of publication of this report:

A Jacobs (Chairman)	F H Smith (Vice Chairman)		
S Westbrook (Fund Raiser)	K Neve (Secretary)		
J Barnes	M Barnes	A Burke	C Copland
J Copland	S Hunt	C Jacobs	I Jenkins
H McClusky	B Mallion	S Peters	B Smith
R Smith	L Tooke	M Varrall	

Inevitably, the burden of work has fallen unevenly and some committee members have done much more than others.

Contributors to the report (Mrs J Copland and Mr F Brophy) are also to be thanked.

The village correspondents who provide news items to the local press have given us publicity, for which we are grateful.

Thanks are also due to all those volunteers who gave their time to collect questionnaires.

We would like to thank Rother Local Strategic Partnership for funding the project as well as Action in Rural Sussex and the Rother Voluntary Action Group for their help and support.

Last but by no means least thanks to all those who completed questionnaires, attended public meetings and gave time and thought to make suggestions.

Illustrations and design work (to both the questionnaire and the report) were provided by Barbarann Lang.

Finally, apologies to anybody who has unintentionally been omitted from the lists.



The story of Bracon Limited, so far.....

It began life in 1952 when two Dental Technicians, a Mr Bone and Terry Crowth of Rotherfield registered the name with Companies House, London with the intention of developing and distributing dental laboratory products.

And how did it get its name? By taking the first three letters of their surnames and mixing them together they made BON and CRA into BRACON.

In 1974 the late Mike Viney, an RAF Halton trained Dental Technician, bought the company from Terry. As the company grew it moved from Frittenden, to Benenden, Rolvenden and then on to Hurst Green. Eventually arriving in Etchingam where for the past eight years it has operated from the former offices of William Ellis (Builders).

Covering the whole of the UK and beyond, Bracon with its experienced and dedicated management and sales team has striven to stay up to date with the ever changing world of dentistry. Together with manufacturers from around the world, Bracon is able to bring innovations and new technology directly to its clients.

Bracon takes pride in its ability to respond to client's individual needs, regardless of type or size of laboratory. It is this level of dedication that has ensured a steadily strengthening client base which has seen Bracon grow into a market leader over the past 50 years and will, we pray continue to evolve over the next 50 and who knows, maybe beyond!

F.J.JARVIS & Sons

High Street, Etchingam Tel:01580 819239

High Street, Burwash Tel: 01435 882213

100 years of service

Albert Newton Jarvis opened a butchers business in Etchingam in 1902.

He had served in the South Africa wars around 1898 – 1900. He returned to his father's butchery business in Burwash and it was not long before he moved to Etchingam.

Albert rented a small shed that used to stand in the front garden of Mount Pleasant Cottages in the high street. Within 2 years he had bought a plot of land to build a shop and house together with ten acres of grazing land. His property, which he called The Willows, was completed by 1904.

~~~

Albert retired from the business in October 1946, but the shop continued to trade with Nelson Jarvis at the helm.

In June that year another nephew, Nigel, joined the firm continuing the tradition, and in March 1990 my brother Graham took over from our father at Burwash. We work as a team offering good quality and good service.

~~~

After 100 years, the business still resources its stock from local farms and largely free range, as Albert would have done.

Now though we sell a much larger variety of produce such as, eggs, milk, cheese, home cooked bread, cooking sauces, home made pies and dry cured bacon.

~~~

With public support, Graham and I look forward to many more years trading in our respective villages.

Nigel Jarvis

# THE ETCHINGHAM COMMUNITY STORES HIGH STREET, ETCHINGHAM, TN19 7AP

Tel/Fax: 01580 819044

[www.etchinghamstores.co.uk](http://www.etchinghamstores.co.uk)

Like Excalibur, it arose from the waters! The waters of the flood of October 12<sup>th</sup> 2000.

The closure of the former Etchingham Stores was inevitable as the waters rose higher and higher on that fateful morning, but a shop had served the village community from this retail site since the 1860's. As realisation dawned that a very important part of the village infrastructure had been lost, many people expressed their support for the shop to be re-opened, if possible. A well supported meeting in the Village Hall confirmed this support. With advice from Action in Rural Sussex, the Village Retail Services Association and Rother District Council Regeneration Officer, grants were sought from SEEDA (South East England Development Agency) and the Countryside Agency. This resulted in the formation of an Industrial and Provident Society, an organisation to benefit the community, and return any surpluses to the community for its benefit.

The Etchingham Community Shop Association Ltd was registered in October 2002. A dedicated band of volunteers swung into action, working with the contractors to complete the new Community Stores, which was opened on June 14<sup>th</sup> 2003, by Mr Charles Moore, the then Editor of the Daily Telegraph. After three successful years, the shop is now re-established as a major part of the village infrastructure, **BUT** it does still need the support of the village community to add to the excellent passing trade if it is to maintain its viability.

*SAVE* time, *SAVE* petrol, make *LESS* environmental pollution,

***THINK Village Community Store FIRST.***



# Topwood Timber

Etchingam High Street Tel: 01580 819111

E-mail: [topwoodtimber@hotmail.com](mailto:topwoodtimber@hotmail.com)

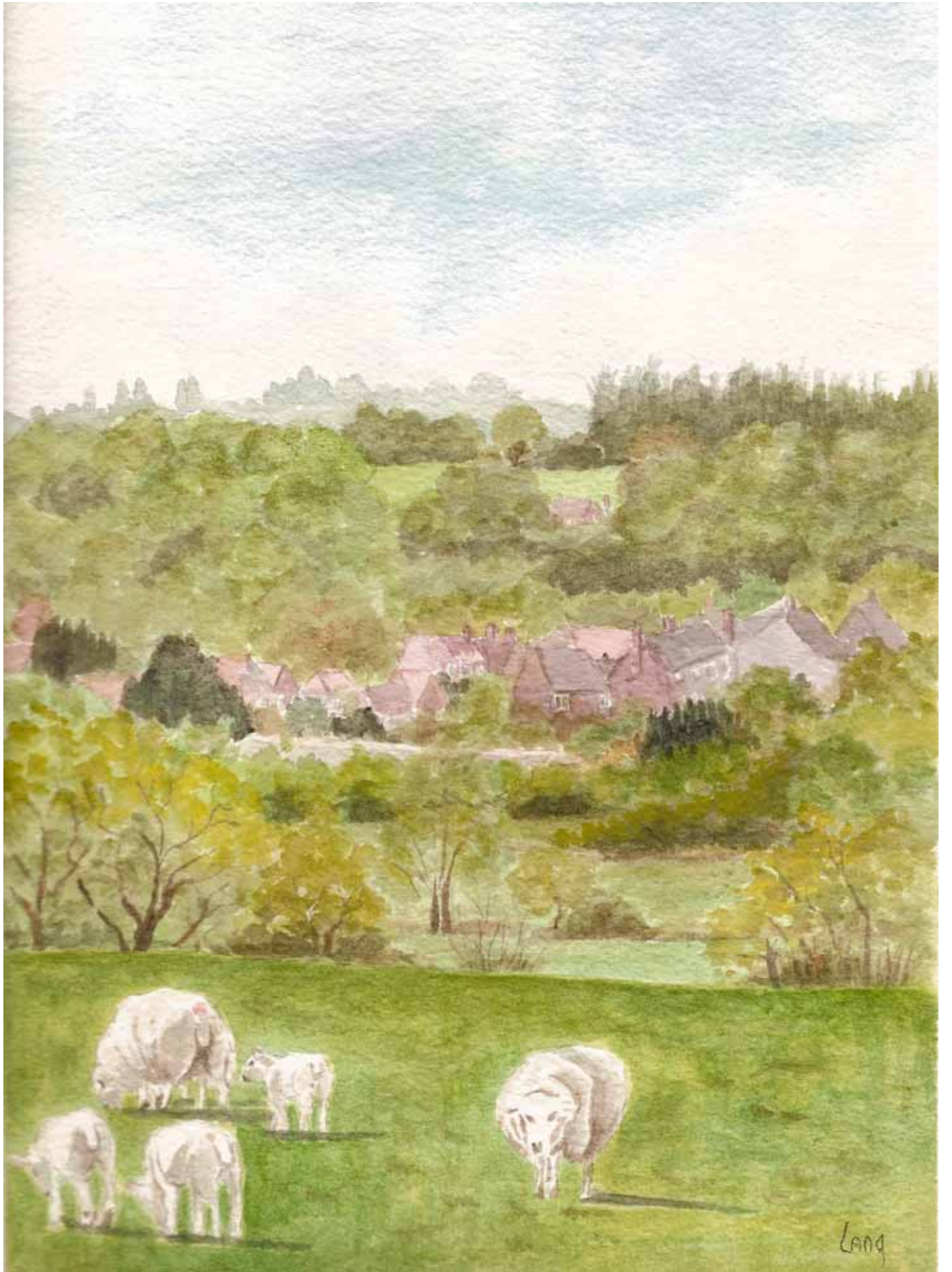
Topwood Timber Buildings was established in the High Street at Etchingam in 1991. We employ eleven experienced and skilled staff to manufacture by hand a first class range of timber buildings either of standard design or to customer's specifications.

~~~

We can supply buildings only or erect in customer's gardens. We also offer a full drawing service should customers need to apply for planning permission or would just like to see how their building will look before ordering.

~~~

Over the years we have enjoyed some existing projects supplying to many well know celebrities and we have exported to the USA and Japan



## NOTES

If anybody would like a copy of the part of the 1991 Village Appraisal, referred to (but not reproduced) in the report on the Etchingam 2007 Action Plan, please contact Frank Smith on 01580-819326.

Framed, high-quality prints of the illustrations contained in the report on the 2007 Action Plan may be available (depending on demand) from the artist (01580-819326), *and the proceeds of any sales will go towards the cost of the production of the Action Plan.*

# Etchingam Action Plan 2007

We enclose the Etchingam Action Plan which has been compiled after lengthy consultation with the village.

~~~

It reflects the views and wishes of villagers and will be a compelling document when dealing with central and district government agencies, as well as funding bodies.

~~~

There is now the task of implementing some of the outcomes of the plan. Some can be achieved quite quickly whereas others will take a little longer.

If you feel that you could help with any part of the outcomes, we would appreciate you getting in touch with Adam Jacobs 01580 819404. Some items on the Plan of Action need someone to make sure they happen. Please take a look and see what you think would best suit you.

~~~

It was noted from the questionnaire that quite a few people were willing to help with various projects, but they forgot to give their names.

Please get in touch.

~~~

---

Name.....  
Address.....  
.....  
Phone.....Email.....

Please indicate the area you are most interested in and someone will contact you shortly to discuss.....

*Please leave this tear-off strip in the Etchingam Stores.*