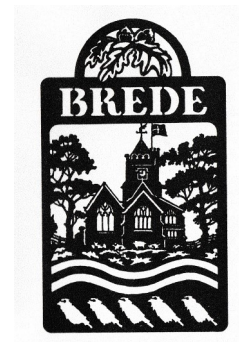


Brede and Broad Oak Community Newsletter

July 2024



Published by Brede Parish Council



Contents Page

3	Notes from the Chair
4-13	Parish Council Information
14	Brede Village Hall
15	Brede School
16	FAIR
17	St George's Church
18	Trinity Methodist Church
19-21	Contact Numbers, Emergency and Groups
22-23	National Trust
24	Brede Mothers' Union
25	Brede Angling Club, 1st Brede Scouts
26	Brede Friendly Circle, Brede and Udimore Lunch Club, Painting for Pleasure
27	Brede WI
28	Brede Steam Giants
29	4 Charities, Design with flowers
30	Little Acorns
31-37	Farmers' Market and Advertisements
38	Halls in the Village, The Small Print
39	Councillor contact details and responsibilities

NEXT Newsletter

The next newsletter will be November 2024. Please ensure all submissions are sent to the clerk, Tracy Dixon (clerk@brede-pc.gov.uk) by **Friday 7th September 2024**.

Brede Parish Council

Notes from the Chair

The Parish Assembly on 8th May was a useful opportunity to discuss matters of interest to us all. Many thanks to everyone who participated; it was good to meet you.

After a report on the Council's work in the past year, Cllr Julie Alison introduced our plans for improving the Recreation Ground with additional equipment, an all-weather path and a pavilion. Our proposals will be discussed in much more detail at a meeting on **Tuesday 9th July at 7pm** so do come and contribute your views. This will be held in Trinity Methodist Church Hall, so we can easily go over to the Recreation Ground together.

At the Parish Assembly, there were also presentations by Dr Lucie Bolton from Rother District Council and Cllr Martin Griffiths on the carbon footprint of this area and steps that we can all take to reduce it. I found it fascinating to see that information is available right down to Parish level. The Council will be doing all it can to reduce its own emissions and to encourage others, but most of the actions will need to be taken by individual households and businesses. There is further information on pages 10-13 of this magazine.

The annual awards afternoon is always a relaxed and pleasant occasion, when we celebrate an organisation and individuals who have made a special contribution to the Parish, as well as awards for the best front gardens. This year it will be held on Saturday 13th July at 2pm in Brede Village Hall. Do join us if you can.

A General Election may lead to substantial changes nationally, but many of the things that affect our lives are decided at the Parish, District, or County level. So thank you for your support for your local Councils and Councillors. Do feel free to contact any of us and to come to our meetings. Our contact details are always on the final page of the Newsletter, with meetings publicised on the parish notice boards as well as the Council's website.

Finally I would like to welcome Cllr Mike Duffield as Vice Chair of the Council.

Have a very pleasant summer.

Stephen Hampson
Chair

Parish Council Notices

Forthcoming Parish Council Meetings

Parish Council meetings are held on the 4th Tuesday of the month, starting at 7.30pm.

They will alternate between the Village Hall Committee Room and the Trinity Methodist Church Hall

Tuesday 23rd July 2024	Trinity Methodist Church Hall
No Meeting in August	
Tuesday 24th September 2024	Brede Village Hall, Committee Room
Tuesday 22nd October 2024	Trinity Methodist Church Hall
Tuesday 26th November 2024	Brede Village Hall, Committee Room
No meeting in December	
Tuesday 28th January 2025	Trinity Methodist Church Hall

Planning Meetings and Extraordinary Meetings will be called as required.

All meetings are advertised on Notice Boards and the Council website.

All residents of the parish are welcome to attend meetings.

Garden Competition and Shield Awards Afternoon

There will be a presentation of awards on
Saturday 13th July at 2pm in Brede Village Hall

Nominees for all garden categories and shield awards will have received an invitation, but the ceremony is open to all

Do come along
Refreshments available

Update on recent Council works and projects

Recreation Ground Development

The Recreation Ground Committee have been working hard looking on improvements that can be considered. Various plans are being developed, including a new pavilion, and more play equipment.

The whole Parish is invited to an open meeting to see the new pavilion plans and hear what the Recreation Ground Committee have been considering for play equipment. This meeting will be on Tuesday 9th July in Trinity Methodist Church Hall, at 7pm. There will be chance to walk over to the Recreation Ground (weather permitting).

New Football Post

A new football post has been erected in the Recreation Ground for the enjoyment of everyone. However, please do respect the neighbouring properties, keep noise to a minimum after 8pm and do NOT climb dividing hedges to retrieve balls.

Graffiti in the Parish: Redecoration of the Bus Stop

The Bus stop in Udimore Road has been decorated, following the graffiti attack over Christmas, and now looks bright and clean. (see picture on the front page).

The Parish Council were informed that the graffiti offender (a minor), had been caught and as a deterrent to further occurrences, was to do some community work in the parish. A spell of litter picking and bus stop cleaning was agreed and has been completed.

ROTHER LOCAL PLAN CONSULTATION

Rother District Council are currently updating their Local Plan, which has now reached the first Consultation Stage. Residents of the Parish are encouraged to read and comment on the plan, particularly in the areas which affect the Parish of Brede.

A summary of the plan can be found at -

[Rother District Council Exhibition Boards \(rdcpublic.blob.core.windows.net\)](http://rdcpublic.blob.core.windows.net)

Comments must be made by 23rd July.

Exhibitions are still available at

Bexhill	The Pelham, Holliers Hill TN40 2DD	2nd July 3pm-7pm
Fairlight	Fairlight Village Hall, TN35 4DA	11th July 3pm –7pm
Robertsbridge	Village Hall, Station Road TN32 5DG	12th July 12noon—4pm

Annual Parish Meeting Reports

Chairs Report (Summary)



Brede is a medium sized parish of about seven square miles and with just over eighteen hundred people. For a while we have been short of Councillors, but I'm delighted to say that, in the course of the past year, we regained our full complement of nine. Some are fairly new, some experienced, but all of us are local

people who want this community to flourish.

With us at all official meetings, carrying out many of the actions between meetings and generally keeping the show on the road is our Clerk, Mrs Tracy Dixon. Tracy is a fully qualified clerk which brings us a lot of knowledge and expertise. We are also joined at most meetings by our District Councillor Neil Gordon and County Councillor Carl Maynard.

We collaborate with many other organisations for the benefit of this community: the District Council, particularly on planning matters, the County Council particularly on highways, the Police, and organisations such as SSALC which represents the interests of Sussex local councils and provides advice and training.

We also of course collaborate with the Village Hall Managing Trustees. The Parish Council are the Custodian Trustees of the Hall, but it's independently managed, and we send observers to their management meetings.

In the course of a year, we held our usual 10 council meetings, but planning meetings are held whenever they are needed. There have been 16 in the past year. At those, we have carefully considered some 40 applications, and have been pleased to recommend to the District Council that they should approve about four out of five. If we cannot support an application, we have to say why, and that needs to be thought through carefully. For instance, loss of privacy is a valid reason, but loss of a view is not. Impact on the community is valid, but strength of local feeling is not. Planning certainly keeps us on our toes, particularly for larger projects.



The planning process is strictly regulated and so is a lot else that we do, so we have quite a range of policies and procedures. In past year we have added a few and we review them year by year to ensure they are consistent with the latest regulations and advice. There are 17 on our website if you want to look into them further.

We work hard to look after our environment. A few of the jobs we do ourselves, many we contract to qualified people, local where possible, and some problems just need to be reported to other organisations.

In the past year, maintenance has included: blocked drains; potholes, (which please note can be reported on-line by anyone, please look for the link on the Parish Council website); pavements that are breaking up; pavements that need to be cleared to be wide enough for a child's buggy or a mobility scooter; loose granite sets waiting to shred a tyre or trip someone up; bollards that have been broken, or reflective bollards that no longer reflect, or have worked loose on their bolts; occasionally, dog bins that haven't been emptied, and litter bins the same; rubbish in laybys; seats that need to be maintained; hedges to trim; verges to be cut, and verges to be left for the wildflowers; planters without plants; lights over signs that need to be replaced; fences to put up or repair; signs to put up and graffiti to be removed at considerable expense. The work goes on through your Parish Council, week in week out.



Amongst all this, we have some good times. The annual front garden awards are always a pleasure and celebrate the work of the many people who keep the village looking smart. Our other awards are for an individual, an organisation and a young person who have made a particular contribution to the community in the past year. The WI won the group award last year. This year our award winners will be celebrated on



Saturday 13th July, starting at 2 pm. Do join us if you can, it's always a good parish occasion.

At about this time last year, a particularly happy event was to give out Coronation mugs to our primary aged children. We still have a few spares if anyone wants one. Although not a Council event, I would also like to thank Cllr Rhiannon Oliver and her friends for the Coronation Tea Party that they organised. Please remember that if you're doing something that will benefit the community, there are often small grants available through the District Council, or ourselves. Contact the clerk for further information.



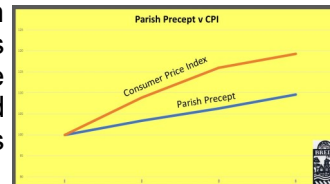
A more serious national event is of course Remembrance, and we are building up our collection of poppies to put up round the Parish. This past year we had a lot along the Recreation Ground fence, and at various other locations.

Many of you will realise that there is a big problem with speeding through the village and, as a community, we could be more pro-active in clamping down on it. But that would require more volunteers. In three sessions this year, our Speedwatch team under Cllr Mark Wey, logged 220 speeding vehicles, with some of them driven very dangerously. One was doing 52mph through the village. All of them are reported to the police to take appropriate action. But we could do so much more with more volunteers. So, if you have got a little time to spare, do please make yourself known to Mark (contact details on page 39).

We have also received the results of a report that we commissioned into ways that speeding through the parish could be discouraged. We're going to review the options again in the autumn, when a revamped County Council team is up and running, but improvements take time and are very costly to implement.

Our Parish Newsletter has been updated in style and content. After many years of good work by Cllr Rhiannon Oliver, it is now edited by our Parish Clerk. It still comes out three times a year, but now has some colour and contains more information about the work of the Council. And there is much more on the parish website, so do make full use of that.

I'm constantly surprised at the cost of some of the things that we would like to do, for instance road improvements or equipment for the recreation ground. But we have tried hard to keep the precept down which, for the past few years, has been much less than the rate of inflation. Our finances are of course very strictly controlled and audited, and I'm pleased to say that the Clerk's work in keeping the accounts always passes the audit with flying colours.



Overall, I think it's been a good year for the Parish, and I'd like to thank not only people who have served on the Parish Council, particularly my predecessor Les Nottage, and the Village Hall management team, but everyone who has contributed to our life together here. The shops and the pubs, the school and the churches and the people who lead the many clubs and societies that we are so lucky to have in this Parish. So thank you everyone for all that you do to make the Parish of Brede a good place to live.

Cllr Stephen Hampson.
Chair, Brede Parish Council

Recreation Ground Development

Cllr Julie Allison

Chair of Recreation Ground Committee

The Recreation Ground Committee was set up during the past year, to look at how the facilities can be improved and maintained, for the benefit and enjoyment of the whole parish. The Recreation Ground is an important and large piece of the Parish Council's responsibilities, and the aim is to make it a nice area for all to enjoy.

In the past few years there have been several improvements, such as replacement swings and basket swing, removal of the boat, installation of a large piece of multi play equipment and most recently a football post.

Further plans include:

- An accessible path to the play equipment, allowing ease of access for those with mobility issues, and those with push chairs and prams
- A small, fenced area of play equipment for preschool age children is also being considered. To include a few rockers, a slide and some static items for imaginative play
- A wild play area behind the old oak with items such as stepping stones and balance beams.

Regular checks are performed on all the play equipment, which include weekly, quarterly and yearly inspections. All concerns and issues are highlighted and repairs undertaken promptly.

The Recreation Ground Committee are also still considering plans for a replacement pavilion for the Community Hall which was demolished in 2022. Various plans have been considered, and the committee are now finalising their final choices.

To share all these plans and to answer any questions, everyone is invited to a public meeting on Tuesday 9th July at 7pm, in Trinity Methodist Church Hall. Plans will be shown and there will be a walk over the Recreation Ground included for those who wish to visualise the positions. There will be the opportunity to ask questions and give feedback.

Please do try and attend.



Climate and Ecological Emergency

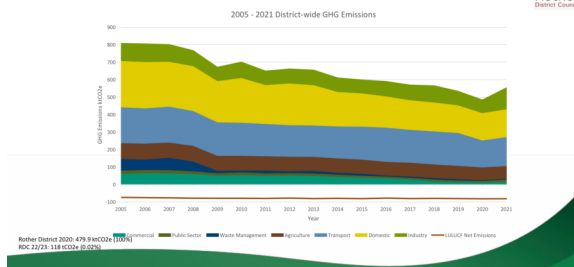
Dr Lucie Bolton

Climate Strategy Office for Rother District Council.

Dr Lucie Bolton gave a presentation about the current Climate and Ecological situation, and what lead to Rother District Council declaring a Climate Emergency in 2019 and making the following pledge.

We pledge to do what is within our powers, to make Rother District Council carbon neutral by 2030, taking into account both production and consumption emissions.

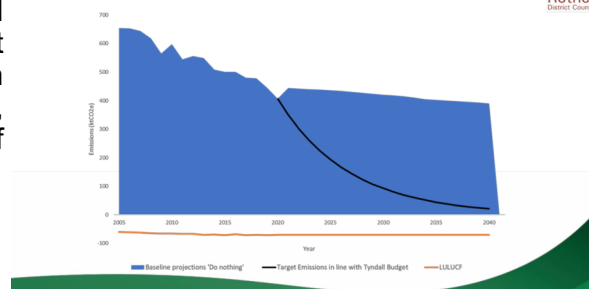
Rother District Emissions



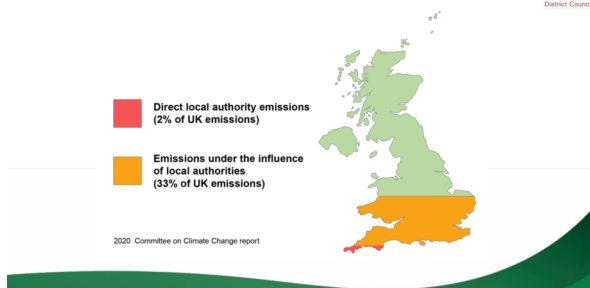
District wide emissions have been slowly falling since 2005 as people are beginning to realise the problems.

The blue shows the expected change if nothing is done, but the black line is the target from 2024, reducing to no emissions, or 'net zero'. Rother's target of net zero by 2030 is challenging.

Rother District Emissions



The Role of Local Authorities



Only 2% of emissions are in the direct control of the Local Authority, but a further 33% are under its influence via regulations such as planning rules.

Climate Strategy involves looking at:

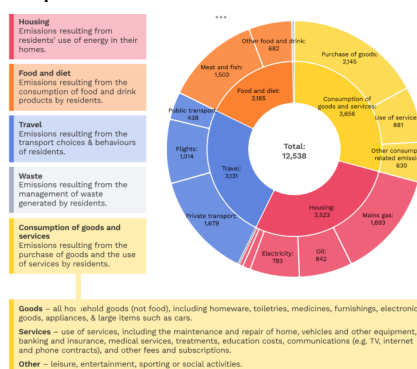
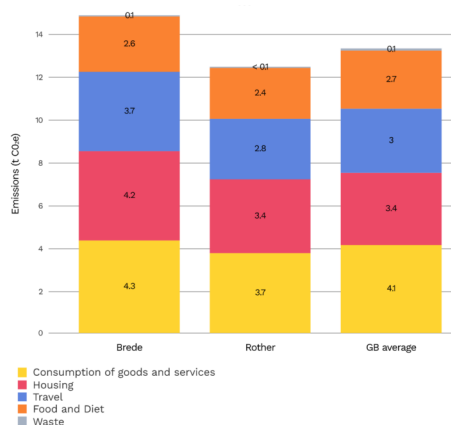
- Buildings and Energy Efficiency
- Transport
- Resource Consumption and Waste
- Biodiversity and Land Use
- Energy Generation

To date 8 out of 33 Parish Councils in Rother have declared a Climate Emergency, and this has involved.

- Establishing a sub-committee/working group
- Carbon baselining/reporting
- Climate Action Plan
- Reducing Emissions

What About the Parish of Brede?

Brede's current carbon footprint for Consumption is shown on this diagram. →



Brede's carbon footprint per households is slightly higher than the average Rother and National Households, which is not unusual for a rural Parish. ←

So what actions could be taken by parish councils?

- Develop and promote green transport plans
- Home efficiency education
- Community food growing schemes
- Community composting
- Repair hubs and a library of 'things'
- Reusable nappy library
- Food waste reduction
- Climate education
- Parish Litter reduction and plastic and packaging reduction
- Managing greens spaces for wildlife

Dr Boltens full powerpoint presentation can be found on Brede Parish Council website 'News' page www.brede-pc.gov.uk/news/climateactionpresentation

Response to the Climate and Ecology Presentation

Cllr Martin Griffiths

Why is Brede Parish Council engaging in this topic and what can it do?

Brede Parish Council currently have no buildings to run, nor do they operate vehicles or provide services with a significant CO2 impact, but there are still things we can do.

Following a number of presentations given at events organised or attended by Parish Councillors, we decided to invite Lucie to a Parish Council meeting last autumn, to talk to us about:

- The reasons why Rother District Council (RDC) declared a Climate and Ecology Emergency
- The actions, led by council officers and by the councils Climate Change Steering Group that RDC itself was taking
- To share some ideas on the sort of things that Town and Parish Councils could, and are, doing.

As a Parish Council we can see a compelling case for following RDC's lead and have agreed we should consider whether Brede Parish Council should also declare a climate emergency.

I believe we can all see our climate is changing - the exceptionally wet winter we have just experienced and the damage it has caused is evidence of that.

However, from the outset, we agreed that simply declaring a Climate Emergency without being able to back it up with some immediate actions, could be little better than an empty gesture.

We agreed that, to make a declaration, we have to be reasonably certain that we can take action, or at least be in a position to help and support people locally to take action.

To take this forward, a working group of Councillors Wey, Duffield and myself has been formed. Our initial task is to prepare an action plan and bring it to council for discussion and hopefully put forward a climate emergency declaration later this summer.

Continued on page 13

Continued from page 12

With no buildings and vehicles of its own, the view of the working party is that the role of the Parish Council will be that of a facilitator, influencer and educator to help people find low-cost ways of reducing their carbon footprint.

Some of the potential initiatives we are discussing include:

- Green transport, promoting the Flexibus and encourage school walking routes
- Becoming a trained energy champion
- Publicising grant opportunities, e.g. insulation, solar panels, grants for small businesses and low-income families.
- Directing people to local clothing banks and recycling points for tetra packs
- Management of the fringes of the Recreation Ground to support wildlife
- Arranging talks by external organisations to support energy usage reductions.

We are also considering a column in the Newsletter, along the lines, of the Radio 4 program, 'Just One thing', but instead of things to improve your health, to cover things you can do to reduce your carbon output.

We would welcome the involvement of residents throughout the parish. Please do contact me, Cllr Griffiths for further information. (contact details on page 39),

Thank you.

Cllr Martin Griffiths.

For further information or to contact Rother regarding the Climate and Ecology emergency please email:
Climate.emergency@rother.gov.uk

RDC Climate Emergency Declaration - 2019

We pledge to do what is within our powers, to make Rother District Council carbon neutral by 2030, taking into account both production and consumption emissions.

Brede Village Hall

During Covid times Brede Village Hall, along with all similar public facilities had to close down. Of course that affected the many people who used it. About 18 months ago there was a real risk that it would become permanently closed, an unacceptable situation for all those who previously used the Hall.



To avoid that situation, I agreed to take responsibility for resurrecting the Hall. Inside a week I had gathered together enough people to form a Management Committee and we set about raising the Hall from its impending doom.

During the closed period Rother District Council donated funds to pay the bills; gas, electricity, telephone, council tax, insurance and maintenance. That also allowed time for the refurbishment of the Committee Room and Treatment Room to take place.

When the Hall re-opened the new committee then had to attract people to use it. Many of the previous users returned showing that there was considerable interest in using the Hall to its full potential. Happily, even more groups have taken advantage of the facilities, with some groups having two or more sessions a week.

Of course we have had to raise the hourly hire rates, all the bills as above have increased dramatically, but we are still competitive with the rates from other village halls, lower than some.

We are improving the Hall all the time. A recent Fire Risk Assessment we are required to have has highlighted some changes that have to be made, there will be other improvements which will soon take place, about which I will tell you about in the next Brede Parish Council Newsletter.

Please go to our website, bredevillagehall.org.uk and select Calendar to see what groups are available to join, or what times are available if you want to start something new of your own, have a party, a meeting in the Committee Room, or use the Treatment Room.

There is large free car park available for Hall users, modern toilets including two separate disabled facilities and a kitchen.

It is easy to book a hire period using the Calendar page on the website, we look forward to welcoming you.



Brede Village Hall

is proud to host

Brede Farmers' Market

Every Friday - 10 'til 12

Come & support your local
fisherman, food producers, crafters
and growers

**Why not enjoy tea/coffee &
fresh cake whilst there!**

Lots of free parking available



Brede School

Despite the wet weather, the children and staff at Brede Primary School have been busy designing and building our new front garden. We've had great fun exploring the new climbing frame, making reading dens and roleplaying our favourite stories using the natural wood frame. In collaboration with Chartwells Schools and the Bumblebee Conservation Trust, our Bee Ready For The Bees Competition inspired the children to design a beetastic, colourful flower garden for bumblebees to feast on. Our school community did not disappoint us, with over sixty incredible entries. With her fantastic yellow bee house and multi-coloured flower garden design, Libby was our overall winner. Some entries are on display in the school's reception area, so pop in and have a look next time you pass. Alternatively, keep your eyes peeled over the summer as Libby's design comes to life for real.

Hedgehogs Class, in partnership with our after-school club, is also busy creating a school vegetable plot to offer lots more opportunities for physical activity, science in action, and learning about healthy eating, the environment and the benefits of gardening on our mental and emotional wellbeing. With the introduction of new balance and wheeled toys, too, expect to hear lots of joyful laughter spilling over the fence for many months to come.

Finally, we have a couple of last-minute spaces available in our reception class for this September; if you're interested or know someone who is, contact us and arrange a visit. With many exciting developments coming up, it's a great time to join us.

Julie Knock Headteacher.





At Friends Altogether in Rother, our new community 'Befriending Service' is designed to provide companionship, friendship, and social interaction to individuals who may be experiencing loneliness, isolation, or vulnerability. The 'community' element of this is already proving successful at our Tilling Tea and Cake, so now we're very excited to share that we've moved into the next phase, with the 'soft' launch of our free telephone befriending service.

As soon as we started planning our telephone befriending, we began receiving enquiries from other community groups and organisations.

We are grateful for a generous donation by Kit McLean of Elm Tree Boot Fair, Icklesham which has enabled us to move forwards with hardware and software needed to get this service underway.

This service is run by Kathy, our Community Volunteer Training Coordinator, who's busy training, supporting and organising volunteers who have stepped forward to become telephone befrienders. Volunteers make regular telephone or video call contact with members of our community who have expressed a wish for companionship.

- Like the sound of a regular call and a chat to break up your day or give you something to look forward to? Befriendees might be older adults, people with disabilities, or individuals facing other life challenges which lead to vulnerability and isolation. If you'd appreciate having regular contact from a volunteer, please get in touch.
- If any of our friends and followers in Brede have a few hours to spare, a good listening ear and a willingness to chat, we would welcome you contacting us.
- Sounds interesting? Would like to be involved with this very rewarding aspect of our befriending service? We'd love to hear from you!
- Contact Kathy / 01797 458832 / E: befriending@fair.org.uk



St George's Brede

Services

Holy Communion at 9:30am
BCP Holy Communion at 11:00am
Benefice Service on Sunday, June 30th at 10:00am at St. Mary's Udimore
Benefice Service on Sunday, September 29th at 10:00am, church TBD.

Any information regarding special services will be found on our website and Facebook.

Little Giants Baby & Toddler group

Every Thursday in Term time at 9:30am.

Join us for playtime, storytime, crafts, music and snacks! Donations welcome.

Visit Little Giants on Facebook, or see our information on St. George's website, for more information!

Little Giants Summer Party on Thursday, July 25th at 10:00am. Join us for summer fun! Summer games and crafts, and some ice cream treats!

Little Giants Pumpkin Party on Saturday, October 26th at 10:00am. Join us for crafts, games, playtime, snacks, and more!

In the Beginning, a Journey through Genesis

Weekly bible study, every Wednesday at 12:00 at the Rectory

Includes homemade soup, bread, and refreshments. Free, All welcome

Contact Owen or Anna for more information on 01424882201

or rector@stgeorgesbrede.org.uk

Benefice Choir

Led by Anna Edwards, a combined choir of all four churches in our benefice.

We perform at benefice services (the fifth Sunday of the month) and special services.

Rehearsals are on Thursday evenings at 6:00pm in Beckley church. Rehearsals are not every week.

Please contact Anna for more information. All are welcome. info@stgeorgesbrede.org.uk

Brede Mother's Union

The Brede branch meets on the first Wednesday of every month at 1:30pm.

Please contact Rhiannon Oliver for more information. 01424882037

St. George's Flower Arrangers Class

We meet on the first Thursday of the month after Little Giants, at 11:00am.

Please contact Rhiannon Oliver for more information.

FLOWER FESTIVAL

August bank holiday weekend.

Flower displays, Granny's Attic, cakes and refreshments, books, plants, and more!

Yours in Christ,

Fr. Owen & Anna Edwards

Please note that Fr. Owen's rest days are on Monday.

St. George's, Brede
**Little Giants
Baby & Toddler Group**



Join us for music,
story time, play &
refreshments

Thursdays in
Term Time
9:30am



Donations Welcome



TRINITY METHODIST CHURCH
B R O A D O A K

Greetings from Trinity

Tuesdays@Trinity has now moved to Mondays with a new name Meet on Mondays. We are there every week from 2 till 4. You can just sit and chat with friends or join in the activities (varied each week) and there is plenty of tea and coffee, biscuits and cakes. Everyone is welcome. There is also the chance to take a book or two from our "Bookswap" or donate non-perishable goods to the Hastings Food Bank.

The Postmaster is there from 2.30 till 3.30. If he is unable to attend any week we will notify you on the village Facebook pages. We are not open on Bank Holidays.

Come4Coffee! Is a new initiative every Wednesday morning from 10am to 12noon. N charges but a good choice of quality teas and coffees, cake and biscuits. All profits will go to local charities. A chance to relax, have a coffee and chat.

Meet on Mondays

**Every week 2-4pm
(except bank holidays)**

A warm welcome awaits you.
Post Office (2.30 to 3.30)
Bookswap
Games
Crafts
Discussions
Foodbank drop off
Make new friends, enjoy tea and cakes. Keep warm in winter.

For transport from Broad Oak or Brede, call 01424 882690

Come4Coffee!

**Every Wednesday
10 to midday**

- Machine made coffees
- Choice of teas
- Cake and biscuits
- Profits to local charities
- Relax, chat and enjoy

For transport from Broad Oak or Brede, call 01424 882690

You are always very welcome to our Sunday services. We normally meet at 10.30 every week. When there is a 5th Sunday of the month, in future we will have a more informal service in the church hall starting at 3pm.

See our website for further or updated information.

www.trinitybroadoak.org.uk

Angela Pepper

01424 753295 / 07950790339

USEFUL CONTACT NUMBERS		
Conquest Hospital		0300 131 4500
Responders		01424 883473
Rye Memorial Care Hospital	No A&E	01797 224499
Northiam Surgery	Dr Sally Parnell	01797 252140
Brede Village Hall Surgery	Rye Medical Centre	01797 223333
Broad Oak Surgery	Dr Richard Albardiaz	01424 882394
Police	Non emergency	101
Schools		
Brede Primary School		01424 882393
Rye College		01797 222545
Robertsbridge College		01580 840669
Transport		
Rye & District Community Bus		01797 227722
Rye Dial a Ride		01797 227722
Churches in the Parish		
St George's Church Brede	Rev'd Dr Owen Edwards	01424 882201
Trinity Methodist Church	Rev'd Philip Wagstaff	01424 755699
St Theresa's Catholic Church	Father Richard	01424 773125
Useful Magazines & Newspapers		
Rye & Battle Observer/weekly	Brede Column Rhiannon Oliver	01424 882037/07375957244
Brede Parish Church Magazine/monthly	David Oliver	01424 882037
Brede Parish Newsletter	Tracy Dixon	clerk@brede-pc.org.uk
Rye Fixtures monthly	Pick up in shops	

Groups in the Village	Contact	Phone number	Venue	When	Time
1 st Brede Scout Group/Beavers & Cubs	Cherry McCleery	07761 730956	Scout Hut	Mondays & Tues	
Bookswap	Stephen Hampson	01424 882690	Trinity Methodist Church	Mondays	2-4pm
Brede & Udimore Luncheon Club	Fran Parnham	01424 882007		4 th Tues	12.30pm
Farmers Market	Ruth Burgess Email farmersmarket@brede.villagehall.org.uk		Village Hall	Every Friday	10am - noon
Brede Friendly Circle	Carol Baxter	01424 883262		3 rd Wed of month	2pm
ComeforCoffee!	Angela Pepper	01424 753295	Trinity Methodist Church	Every Weds	10-12
Friends of Brede School		01424 882393			
Mothers' Union	Rhiannon Oliver	01424 882037	St George's Church Room	1 st Wed of month	2pm
Meet on Mondays	Angela Pepper	01424 753295	Trinity Methodist Church	Mondays	2-4pm
Beginners Yoga	Jodie Creaser	07583 469584	Village Hall	Tues Wed	7.30-8.30pm 9.30-10.30am
Pilates	Geraldine Bennett	07811 141873	Village Hall	Thurs	6.30pm
Adult Ballet Barre Class	Aysha Jamie	01424 883238	Village Hall	Thurs	11am
Little Giants Baby and Toddler Group	Contact via Facebook Little Giants Baby & Toddler Group		St George's Church	Thurs (term time)	9.30am to 10.30am

Groups Continued	Contact	Phone number	Venue	When	Time
Bell Ringers			St George's Church	Every Sunday	8.30am
Brede Crafters	Jacqui Armstrong	01424 883091	Village Hall	Last Wed of month	2- 4pm
Post Office	Angela Pepper	01424 753295	Trinity Methodist Church	Mondays	2.30– 3.30pm
Women's Institute	Beryl Jenkins	01424 883475	Village Hall	2nd Wed of month	2-4pm
Brede Steam Engine Society	Barbara Adkinson		Brede Water-works	1 st Sat of month	10am – 4pm
BSARS	m0nuc.bsars@gmail.com		Scout Hut	Tues & 1 st Sat	
Design with Flowers	Rhiannon Oliver & Sue Sturmeay	01424 882037 01424 882544	St George's Church Room	4th Thurs of month	variable
Painting for Pleasure	Margaret Sandra	01424 883149	Village Hall	1 st , 2 nd , 3 rd Tue of month	9.30am
Angling Club	Donna Bolton	07842 790237			
Cricket Club	Graeme Dining	079412288660 01424 852413			
Short Mat Bowls Club	Lynne Bramley/ Sue McGavin	01424 882252/ 01424 883566	Village Hall	Fridays	7pm
Rye and District National Trust	Keith Sellens	07940 777250	Village Hall	3rd Thursday	2pm



The Rye & District Association of the National Trust has an active membership drawn from Rye and the surrounding area, in particular Beckley, Brede and Northiam, but extending out to Tenterden and Hawkhurst in the north, New Romney in the east and Hastings and Bexhill to the west.

We are a friendly social group with membership open to all - you don't have to be a member of the National Trust! Our objectives are to provide interesting and enjoyable activities and events for our members, whilst raising funds for the support of the National Trust. The committee is keen to expand – we do need more volunteers to help organise our events. So, anyone interested, please step forward and contact our secretary! (*see below*)

Events: We have Walks, Talks, Outings, Theatre Trips, Quizzes and much more! In May, 34 of us enjoyed a superb annual Spring Lunch, this year again at Brickwall Hotel Seddlescombe. In June a coach load of us took a day trip to Firle Place in the morning and then Lewes in the afternoon.

Monthly Walks: (September to June) They are on a Tuesday or Thursday, start at 10am at the chosen venue, are approx 5 to 6 miles, but followed by a long lunch at a suitable inn! In September our walk starts in Appledore; in October it starts in Bodiam.

Monthly Talks: (October to May) They are on the 3rd Thursday of the month at 2 pm in Brede Village Hall. Our 2024-25 programme is currently being finalised. Information will be available in due course in our Newsletter and also local Parish Magazines. However, the October talk is on Thursday 17th, on 'Coastal Cocoa – a talk about Chocolate!'

Annual Golf Day: This year we return once more to Tenterden Golf Club, where we have previously held very successful competitions. It will be on **Friday 6th September**, with play followed by an excellent lunch in the Club House. If you play golf, do book your place and join us!





Afternoon Tea: This is on **Thursday 19th September** at Waterside Café, overlooking the main lake at Hawkhurst Fish Farm, serving fresh homemade food using locally sourced ingredients.



Outing to Chartwell: This is on **Thursday 10th October**. We have arranged to have a private talk with tea/coffee, before self-led tours. The Chartwell guides are extremely well informed and should give us a fascinating insight into the great man himself and his family life.

Quiz Night: [This is on Wednesday October 23rd](#) a fun night in Beckley Village Hall, with supper included (food yet to be decided, but may well be sausage mash & onions!)

Theatre Trip: We plan to have a theatre trip in the autumn. [Information will be available in due course in our Newsletter and also Parish Magazines.](#)

Christmas Party: On **Thursday 5th December** we round off 2024 with our usual Talk & Party. This year we plan the 'talk' to be a seasonal entertainment, followed by a tasty buffet – a wide selection of food, washed down with mulled wine!

If you wish to join our association or just come along, contact Dee Williams, Membership Secretary, membershipryenationaltrust@gmail.com, 07760-115413, or Louise Hull, 07791-383323.

John Wright

Sadly, as I write this during May, we heard our late Brede Branch Leader Ruth Gasson had died. She was Leader for many years before they asked me to take over the role. She was loved by us all and we were sad when she could no longer join us for meetings, as she had moved to Whitegates in Westfield. When visiting Ruth, she was cheerful and looked in good health, so it was a shock when we heard the news. Ruth did so much for the Church, and this earned her The St Richards medal, a very high accolade and much deserved by Ruth.

Last year we lost another of our members, Doris Henly – she left a huge legacy to Brede MU and we had to think carefully how we would use it and how she would like us to spend it. We decided to give £5,000.00 to the AFIA project and the caravan at Winchelsea. It required a new safety veranda and our contribution helped to have it built. We also had a plaque laid in Doris's memory.

Last year in Summer, we took Little Giants parents and children, and Family Support work families, to the Rare Breeds Centre at Woodchurch Kent. Everyone had a superb day and were tired out at its end.

This year we did not have a meeting in January as it was the 1st. We had speaker Steve Edwards talking about the 4 Charities and it was held at one of our prospective new member's home in Peasmarsh.

In June we are having a talk from Rev Dr Liz Varley on 'Her life as a nun'

Our July meeting will be a garden party at Gwen's whose home is on the ridge, so the views will be terrific. We do not hold our normal meeting in August, but we do meet on August 9th for Mary Sumner Day in Hellingly Church, and Brede are doing the book stall. We will also take our Banner.

In September we are starting a new course for four months called 'Metamorphosis'. Anna is looking into how we tackle the information we have been given.

We still do the hospital bags but, as we do not use our legacy for this, we still need to fundraise. We have named it CHAS (Conquest Hospital Adult Support). We are welcomed every time we take a box of bags in and the Sister has my details to contact me when they need to be replenished.

There are other schemes that we could help with, but we need a younger membership as half of ours are now over 90. We could help more with the Citizenship Ceremonies. We could support the Baby Unit in the Conquest where MU have a service called 'Eat Cake' This is where mums and dads of poorly babies can talk and over tea and cake. Then there is the Winchelsea Caravan; more help is required there. If you want to make a difference to the lives of other people as well as having worship, then do come and join us. Men and women of all walks of life are invited.

Please contact either Rosemary on 01424 882567 or Rhiannon Oliver, Brede Branch Leader and Bexhill District Chair on 01424 882037

Brede Angling Club

Brede Angling Club is a small village club with the sole fishing rights to the Kingswood Pond, which is situated in the fields to the left just before the village hall. We are affiliated to the Rother Fishery Association (RFA), which gives access to further waters at Newenden, Bodiam and parts of the Military Canal.



We are a member only club. Membership rates are currently £20 a year for adults and £7 for juniors (over 5yrs old, under 5's - free). Children must be accompanied by a responsible adult to ensure adherence to club rules and safety around open waters. Membership runs from June to June each year. We follow the closed season on RFA waters, but the Kingswood Pond remains open all year round.

We are now accepting requests to renew existing memberships for the coming season and we welcome new memberships. We will now only accept payment by bank transfer. Requests to renew can be sent by email or post to the Club Secretary and membership cards will be sent out by post. Please do not turn up in person to buy a membership. Please contact the Club Secretary for more information, details below. Memberships will only be issued Monday – Friday and please allow 5 days to receive your membership card from making payment. Day tickets are available £5 per adult, £2.50 under 16, (must be accompanied by an adult).

For further information please contact Donna Bolton by email at donnabolton989@gmail.com or call 07842790237

1st Brede Scouts



Brede Scout Hut, Stubb Lane', Brede TN31 6EG

Mondays 5–6pm Beavers 6 to 8½

Monday 6.30—8pm Cubs 8½ - 10½

Tuesday 7—9 pm Scouts 10½ to 14½

1st Brede Scouts still have vacancies in all sections.

We are still in need of new and additional Cub and Beaver Leaders; why not come and help and go on from there.

Contact Cherry for information

Group Scout Leader

Cherry McCleary

07761 730956

gsl1stbrede@hotmail.com

Beaver Scout Leader (6-8 yrs)

Cherry McCleary

07761 730956

gsl1stbrede@hotmail.com

Cub Scout Leader (8-10½ yrs)

Peter Clark 07702 407725

faamclark@hotmail.com

Scout Leader (10½ to 14½ yrs)

Luciano Frige 07818 070807



Brede Friendly Circle

We gather on the 3rd Wednesday of the month. Meeting at 10am, aiming to arrive at our destination by 10.30am, depending where it is and how many miles we must travel. We do enjoy going to different places for coffee.

Since March we have enjoyed trips to the Fish Farm at Hawkhurst, Silcocks Tea Rooms, St Michaels in Tenterden and finally in June, Tibbs Farm Udimore.

In July we have our annual garden party, we do not meet in August; then in September we are going to Ashburnham Place tea room and in October we will be at the NT Bodiam Castle Restaurant. In November we plan to go to Miss Molletts in Appledore and then for December we will be having lunch at Flackley Ash.

If you feel you would enjoy having coffee with ladies and putting the world to rights, then please contact the Secretary Carol Baxter 01424 883262. We would be delighted to have more members.

Brede and Udimore Luncheon Club

The Luncheon Club meets on the fourth Tuesday of the month at 12.30. p.m. at the, 'Red Lion', in Brede. At our friendly and sociable Club, members are served a two-course lunch prepared and cooked by chef, Gary Skipsey and his team of helpers. The cost is £10pp and drinks can be purchased from the bar to accompany the meal. We always finish the occasion with a raffle!

For information about the Lunch Club, please contact:
Frances Parnham T. 01424 882007

Brede Painting for Pleasure.

Painting for Pleasure is a friendly art group that continues to meet at Brede Village Hall on Tuesday mornings 9.30-12.30. We do our own thing, but help each other when needed. We have a few spaces available at the moment. The fees are £10 per annum membership fee plus £3 per week payable only on attendance (tea, coffee and biscuits included). We hold an exhibition of our work for sale every August bank holiday. If you wish to join, please contact Ann Cootes on anniecootes@icloud.com.

Brede WI

Since the beginning of 2024, Brede WI members have had the opportunity to experience a range of entertainment at monthly meetings, including hearing about 'How to spot and avoid scams,' our 'Robin Hood' pantomime, a presentation from Southern Water on 'Unflushables,' and their competitive streaks came to the fore at the Quiz and 97th birthday celebration in April.

How lucky we were that our visit to Hole Park in Rolvenden, with its bluebell wood, happened to take place on the most summery day so far this year! Members enjoyed a splendid visit strolling around the beautiful gardens, followed by lunch in the Coach House.

At the time of writing, croquet club members are looking forward to resuming sessions for the coming season in May, whilst other less weather dependant clubs continue throughout the year. Book Club, Games Group, Lunch Club, Film Club and Creative Writing take place regularly, and our member, Joolz Hunt, runs and coaches the local Walking Netball Club. Each club is organised by a co-ordinator and all members are eligible to join.

If you are interested in finding out more about the WI in Brede, Beryl Jenkins (01424 883475) would be pleased to help.

Beryl Jenkins

President, Brede WI



BREDE STEAM GIANTS

Our Open Days in the summer months are usually the busiest of the year with many families and groups choosing to visit "The Giants". We get visitors from all over the world, and everyone is always very interested to hear the story of the "Giants". Our volunteers always enjoy showing visitors around the site and answering their questions.

We also enjoy hearing memories from the Brede residents about family members who were involved in building or running the Waterworks in the past; some of their stories are amazing!

POWER HOUSE

Now that the steel framework has been erected, we are expecting work to begin very soon to build the walls and roof of our new building. However, as soon as this work begins, we will be unable to use our electric compressors to power the "Giants". We do have one diesel generator that we will still be able to use but, unfortunately, it doesn't have the capacity to run all of our engines at the same time. In order to continue our operations, we have decided that we will run half of the engines in the mornings and the other engines in the afternoons on our Open Days. One advantage of this is that visitors who are on-site at lunchtime will be able to watch our volunteers when they stop some of the engines and start the others. Usually, all the engines are started at 10am, as we open, and then run all day, so this will be something different to see. As soon as the building work is finished we will be able to return to using our electric compressors, which will be relocated in their new Power House. We will also purchase two extra electric compressors because we will have enough room for them in the new building. The old diesel generator will then be scrapped, and we will run all the engines in a more environmentally friendly way. This change is a major project but will, hopefully, enable the "Giants" to operate well into the future. We have been fund-raising for many years to enable this change to take place and feel really happy that at last it is finally happening!

We would like to thank everyone who has contributed to enable this major project to become a reality; do come and see how we are progressing.

We continue to open on the first Saturday of every month and Bank Holiday Mondays from 10am - 4pm.

We have a small cafe serving hot and cold drinks and homemade cakes. There is now an accessible toilet which also has a baby-change facility, in addition to our original facilities (these are only accessible via a flight of steps).

Entry and guided tours are free. Donations are always welcome to help us to keep these wonderful engines operating.

The village of Brede is really fortunate to have such a wonderful Heritage site within its boundary. If you haven't seen the "Giants" already it is well worth popping in for a quick look - it won't cost anything and you may be amazed!

We look forward to welcoming you all!"

4 Charities

Previously known as the Brede and Udimore Overseas Group, 4Charities was founded some 60 years ago by Iris Laker of Udimore who, during a visit to Tanzania, was horrified to see so many deaf children. On her return home, she held coffee mornings to raise money for The Deaf in Tanzania and this was the origins of 4Charities.

Three other charities have been added over the years, meeting our objective of providing assistance overseas to smaller charities (except for Sightsavers - that have grown hugely), so our donations could go further and provide a greater benefit to those they are supporting.

Funds are raised by holding regular **Soup, Scrabble and Get Together** on the first Friday of each month in the St. Mary's Community Hall at 12 noon and other events arranged throughout the year.

Even if Scrabble is not your 'thing', you are welcome to come and just enjoy a bowl of soup, a chat and meet others, followed by tea and coffee. All funds raised are distributed annually to the four charities, we have no administration costs as the team's time is free.

All the four charities are UK registered and are:

Deaf in Tanzania is a UK charity dedicated to helping deaf people in Tanzania where deafness can lead to ostracization.

Freedom from Fistula helps women and girls who are injured following obstructed childbirth.

PNGCP which is a collaboration between seven Christian denominations and AUS Aid to introduce peace and health activities in Papua New Guinea.

Sightsavers who work worldwide to combat blindness in developing countries.

Liz Turgoose on 01424 882657 would be happy to talk to anyone who would like to know more about the group; otherwise, why not make a note of the dates and come along?

More information is available by visiting our website - www.4charities.net

Design With Flowers



We meet on the 4th Thursday of the month from 11am to 12.30pm in Brede Church Room.

11th July An English Country Garden.

The session will take place at 2 Bellhurst Cottages Chitcombe Road at 11.30am

August will find us busy at Brede Flower Festival why not go and see what our talented young ladies can do.. Then you can join us and do it yourself.

26th September A Pedestal. Brede Church at 11am

24th October A Halloween Design

If you would like to be able to arrange do come and join our friendly group .

Help is always on hand; so is equipment.

Contact Rhiannon Oliver 01424 882037

Little Acorns, Children's Page

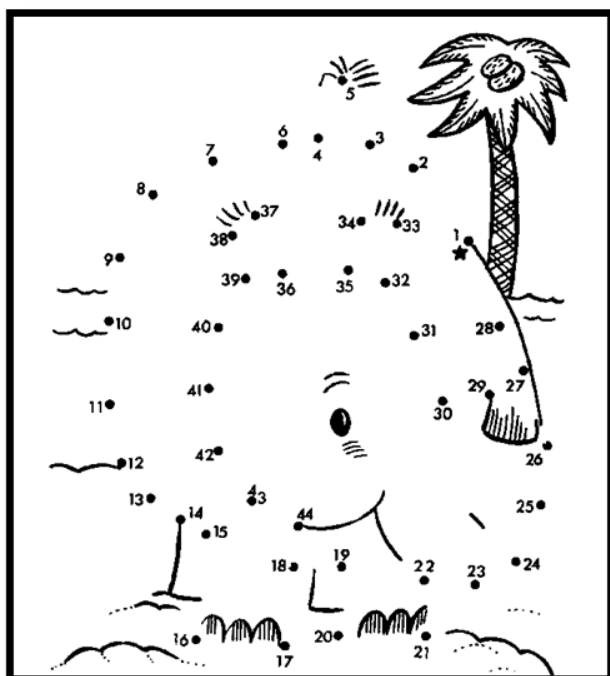
Colouring

You may enlarge and photocopy this picture to make your own card.

Or to enter our competition.

Enter the competition by:

sending your pictures to
Cllr Rhiannon Oliver
2 Bellhurst Cottages,
Chitcombe Road,
Broad Oak TN31 6EU
with your name, age and
telephone number by 15th
September 2024



Prizes will be awarded for the best in your age group.

Congratulations to Eva our winning entry for the March edition.

Dot to Dot

Follow the numbers with a pencil to find what they reveal.

Then colour it in.

Why not put one picture on the front and one on the back and send it in to win a prize?



EB SCULPTURE LTD
Elliott Brotherton

Unit 7, Old Broad Oak Farm Business Centre
Udimore Road, Broad Oak. TN31 6BX

01424 883059 07887 993884

elliott@ebsculpture.com

www.ebsculpture.com

ALL TYPES OF STONWORK
stone carving
lettercutting
headstones and tablets
memorial cleaning
name plaques
steps
fireplaces and hearths
sculpture
restoration
stone supply, cutting and cleaning



Member of National Association
of Memorial Masons
and Guild of Mastercraftsmen



Pest Control

Moles, Rats, Wasps

Rabbits, Mice

Birds and More

Call Jordan

07814 023641

jordanspestcontrol@hotmail.com.



KRISTINA CLODE
GARDEN DESIGN



Landscape Plans
Planting Design
Garden Advice
Garden History Research

Creating beautiful gardens
with stunning planting and
year round interest.

M: 07950 748097

info@kristinaclodegardendesign.co.uk

www.kristinaclodegardendesign.co.uk



CHRIS SANDS

For carpet, upholstery

and antique rug

cleaning

Collection and delivery can be arranged
on request.

2 Hous Close

Broak Oak

Brede, TN31 6ER

Tel: Brede 01424 882907



Kim Smith



Registered Childminder

Do you need childcare - Full time or part time?

If so, please contact me for further information.

I'm an Ofsted Registered Childminder in Broad Oak Village.

Ofsted graded 'Outstanding' 2007, 2010, 2016 and 2020

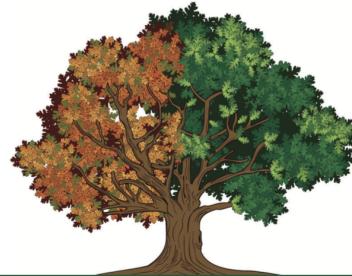


**For high quality, reliable childcare call
KIM SMITH 01424 883427 or
07903701066.**



Oakden Tree Care

Professional tree work & hedge cutting



**Arboricultural, Forestry & Utility Contractors | Felling & Thinning | Hedge Trimming
Ash Dieback Management Plans | Dangerous Trees | Reductions & Pruning
Stump Grinding | Fully Insured | Free Estimates**

24 Hour Call Out | Fully Insured

Mob: 07973 146165 Tel: 01797 230417 oakdentreecare@outlook.com

www.oakdentreecare.co.uk



WEALDEN WILL WRITING

WILLS, LIVING WILLS, POWERS OF ATTORNEY, WILLS FOR SECOND MARRIAGES,
PROTECTIVE PROPERTY TRUSTS, PROBATE AND ESTATE ADMINISTRATION.

Both parts Lasting Power of Attorney and basic will (no trusts) £350/£650 per couple.

BEFORE YOU MEET YOUR MAKER, MEET YOUR WILL MAKER !

Paul Billingham SWW

Email: paul.billingham@wealdenwillwriting.co.uk

Telephone: 01424 756053

Mobile: 07814 995202

www.wealdenwillwriting.co.uk



Member of The Society of Will Writers
and fully insured by Hiscox



Safe to do
business with
Code Compliant

Carpets & Floors

**Carpet and Vinyl Flooring supplied and fitted.
Same choice as any shop but at up to half the price.**



**We can move your
furniture for you
and take away your old carpet.**

**For free home sample viewing and estimates
please call Stuart on 01424 855882 / 07734 659834**

Email: bargainfloors@hotmail.co.uk

www.bargainfloors.co.uk

PROUD MEMBERS OF

Checkatrade.com
Where reputation matters



Private Children's Nursery

Baby room and Pre-school
3months-4years

8am-4:30pm

Open all year round.

info@countrybuttercups.com

01424 883000

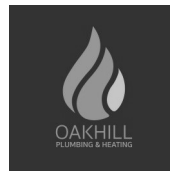
OAKHILL PLUMBING & HEATING

Local, reliable and fully qualified
in all aspects of plumbing and
heating.

Call today for a free
no obligation quote.
07807 333089

Or email:

Info@oakhillplumbingandheating.co.uk



**DOMESTIC PLUMBING
& GAS SERVICES**

**BOILER INSTALLATION, REPAIRS & SERVICING
GAS SAFETY CHECKS & CERTIFICATES, BATHROOMS**



Scan the QR code for an
instant online boiler quote



m: 07833 432 839

e: info@eastsussexgas.co.uk

Carpets

Vinyls

Lvt's

Woods

Laminates



MICHEL_BURGESS@HOTMAIL.COM

07860623574

Also find us on Facebook



Professional
tree care
solutions



We cover every aspect of tree surgery including crown lifting, thinning, reductions, shaping, deadwooding, tree removal & stump grinding plus hedge cutting, conifer control, planting, turfing & garden clearance.

Call for a free written quotation.

- College trained, NPTC qualified
- Reliable & friendly service
- Comprehensively insured
- Very competitive rates

01424 810202 07768 395656

info@thetidytreecompany.co.uk www.thetidytreecompany.co.uk



Proud members of
Checkatrade.com
Where reputation matters

Become a Community Volunteer



Discover the power of companionship and connection while making a difference in your community.

Whether you're seeking a sense of belonging or simply want to give back, become part of our team dedicated to making a difference.

"What a ray of sunshine entered my home. She is so empathic, kind and generous of spirit...I look forward to each week with a happy heart." - Alan.

To get involved, scan the QR code or call
01424 445177



Pictured: Alan and
Community Volunteer Hannah
stmichaelsospice.com
Registered charity number 288462



Dans Fencing
All types of Fencing installed
dansfencingltd@gmail.com
07900230993



Personal training, Pilates & Circuit training classes

**Personal training within the
Hastings & Rother area**

Westfield classes:

**Monday 5pm Pilates
Monday 6pm Circuit Training
Thursday 6.30pm Circuit Training
Thursday 7.30pm Pilates**

Hastings classes:

**Monday 9.45am Pilates
Monday 10.45am Post-natal Pilates**

**Hannah - 07795551015
hw-fitness.co.uk**

PLATINUM GROUNDWORKS

GROUNDWORKS • DEMOLITION

01424 882601 | 07730037636

info@platinumgroundworks.co.uk

www.platinumgroundwork.co.uk



Your Local Independent Retail & Interior Specialist

Interiors • Curtains • Blinds • Paints

Upholstery • Lighting • Cards • Gifts

Workshops • Café not Café



Ooh How Lovely



Look on the web: oohhowlovely.co.uk

Instagram: [ooh_how_lovely](https://www.instagram.com/ooh_how_lovely)

Facebook: [Ooh How Lovely Ltd](https://www.facebook.com/OohHowLovelyLtd)

Telephone: 07400 522081

Visit us at: The Old Broad Oak Farm,
Udimore Road, Broad Oak, Rye, TN31 6BX

• • • Plenty of Free Parking • • •



Halls in our Parish

Brede Village Hall:	Penny Williams 07541 263 991
Scout Hut:	Cherry McCleery 07761 730956
Brede Church Room:	Wardens 01424 882037
Trinity Methodist Church:	Stephen Hampson 01424 882690

Brede Village Hall

Brede Village Hall offers a bright modern building with central heating and a well fitted kitchen, an extendable stage and disabled facilities. Seating is available for up to 120 people. There are tables, chairs, crockery and cutlery for over 100 people. There is plenty of off-road parking. What more could you want?

Booking Clerk Mrs Penny Williams 07541 263991

For more information go to www.bredevillagehall.org.uk and you will find details of the hall facilities, a schedule showing when it is available for hire and contact details. If you would like to have a look at the hall before booking to see if it is suitable for your purpose, that can easily be arranged.

For hiring charges please visit the website: www.bredevillagehall.org.uk or ring the booking clerk.

Brede Scout Hut

Cherry McCleery 07761 730956 gsl1stbrede@hotmail.com

The perfect venue if you require a smaller hall, with a large, grassed outdoor area, big enough for a marquee and a small patio area. Ideal for weddings, parties and small groups. Small parking area for roughly 15 cars. Good sized kitchen with dishwasher, range cooker and fridge-freezer. Toilets, including disabled toilet and a shower.

Charges; £6 per hour plus a £50 deposit, refundable if premises left as found.

Overnight camping £10 plus £3 per person.

Some evenings not available due to Scout Groups meeting but, please text or call for more information.

Trinity Methodist Church and Hall

Trinity has recently been re-furbished and the hall, a small meeting room or the whole building are now available for hire. The Church, which has a good sound system, seats about 75 and the hall about 35 depending on the layout. The premises are fully accessible with ramps to the front and side, an accessible toilet and a hearing loop in the church. There is a modern, well-equipped kitchen and modern heating and lighting throughout the building. Further information is available on our website www.trinitybroad oak.org.uk, or visit us to look around.

The Small Print

This newsletter is produced and published by Brede Parish Council, The Hurst, Netherfield Hill, Battle, TN33 0LA. All rights reserved. No part of this publication including interior design and cover design may be produced or transmitted in any form or by electronic means, (photocopying, recording or otherwise) without prior written permission of the copyright holder. The information given in this publication is believed to be true and accurate at the time of printing. No responsibility can be accepted for errors or omissions. If you intend to action any information given, please check with the body, or organisation. E & OE.

To make comment, have letters published, or enquire about advertising, contact: The Clerk, Mrs Tracy Dixon, clerk@brede-pc.gov.uk. Tel: 07540 562345. Comments, views or opinions expressed by contributors to this Newsletter are solely those of the writer not of Brede Parish Council which can accept NO RESPONSIBILITY.

Councillors	Email Address	Tel No
Cllr Stephen Hampson Chair	Cllr.Stephen.Hampson@brede-pc.gov.uk	01424 882690
Cllr Mike Duffield Vice-Chair	Cllr.Mike.Duffield@brede-pc.gov.uk	07789 487819
Cllr Martin Griffiths Planning Chair	Cllr.Martin.Griffiths@brede-pc.gov.uk	07836 662216
Cllr Julie Allison Recreation Ground Chair	Cllr.Julie.Allison@brede-pc.gov.uk	07816 322502
Cllr Mark Wey Speedwatch	Cllr.Mark.Wey@brede-pc.gov.uk	07974 196309
Cllr Rhiannon Oliver	Cllr.Rhiannon.Oliver@brede-pc.gov.uk	01424 882037
Cllr Greg Olson	Cllr.Greg.Olson@brede-pc.gov.uk	01424 882489
Cllr Dan McDonald	Cllr.Dan.McDonald@brede-pc.gov.uk	07395 186152
Cllr Mark Chamberlain	Cllr.Mark.Chamberlain@brede-pc.gov.uk	07540 448794
District Councillor Neil Gordon	Cllr.Neil.Gordon@rother.gov.uk	07711 042934
County Cllr Carl Maynard	Cllr.Carl.Maynard@EastSussex.gov.uk	07500 224869
Clerk Mrs Tracy Dixon	Email: clerk@brede-pc.gov.uk	07540 562345.

Committees and Responsibilities	Councillors
Planning	All Councillors
Highways	All Councillors
Brede Village Hall liaison	Cllrs M Duffield and D McDonald
Footpath liaison	Cllr G Olson
Recreation Ground & Equipment	All Councillors to report as necessary
Finance and Audit	Mrs T Dixon / Mr K Robertson
Trees, Seats, Bus Shelters, Bins, Hedges	All Councillors to report issues.
Newsletter	Clerk, Mrs T Dixon
Speed Watch	Cllr M Wey
Website and Facebook	Clerk, Mrs T Dixon
RALC & ESALC Representatives	Cllrs M Griffiths and M Wey
Recreation Ground Committee	Cllrs Allison, Oliver, Griffiths and Hampson
Personnel Committee	Cllrs Allison, Duffield and McDonald

