

Climate and Ecological Emergency

Dr Lucie Bolton
Climate Strategy Officer

Talk Outline

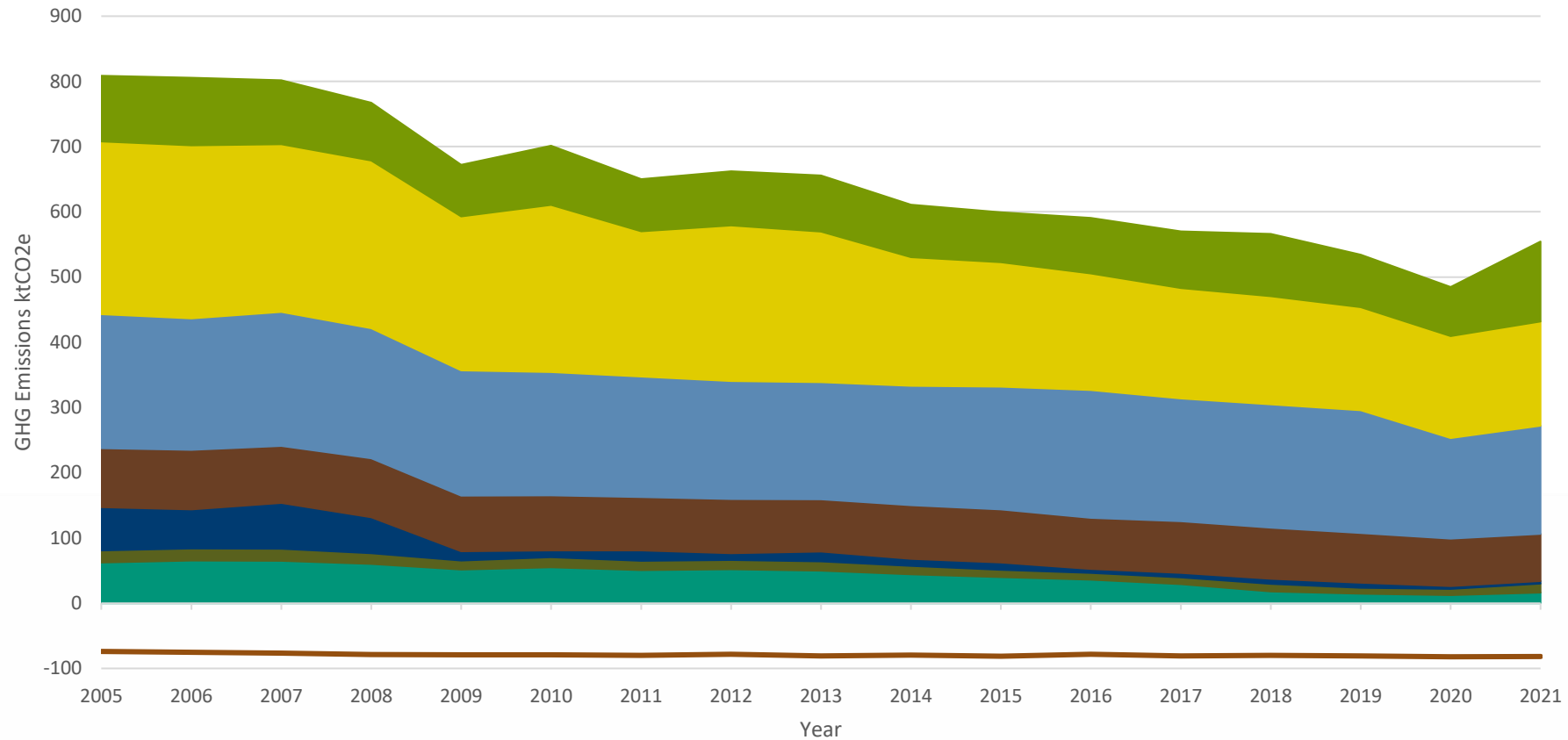
- Introduction
- District Emissions
- Role of Local Authorities
- RDC Climate Action
- Town and Parish Council Climate Action
- Bodiam's Carbon Footprint
- RDC Support



ROTHER
CLIMATE
ACTION

Rother District Emissions

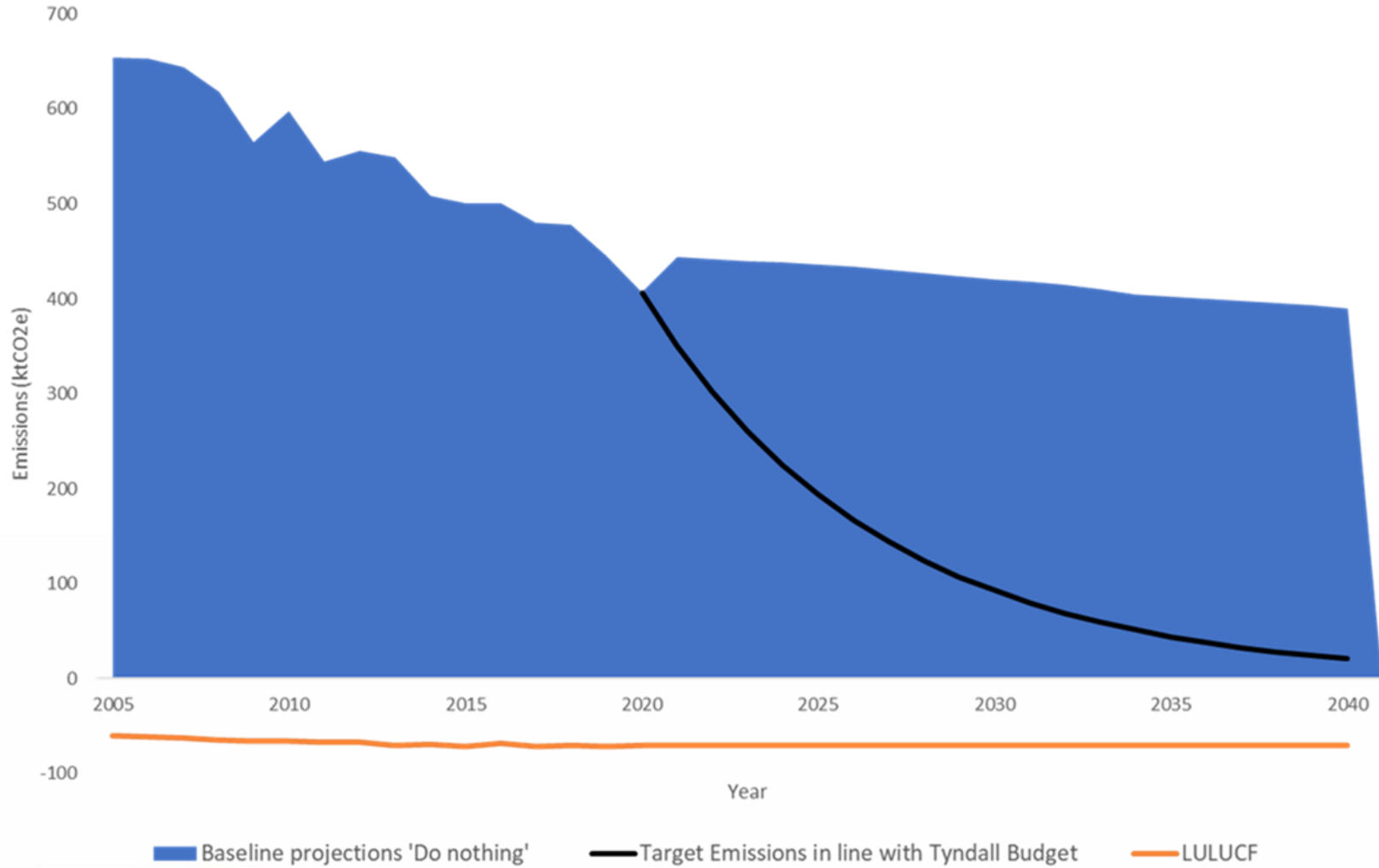
2005 - 2021 District-wide GHG Emissions



Rother District 2020: 479.9 ktCO₂e (100%)
 RDC 22/23: 118 tCO₂e (0.02%)

Commercial Public Sector Waste Management Agriculture Transport Domestic Industry LULUCF Net Emissions

Rother District Emissions



The Role of Local Authorities

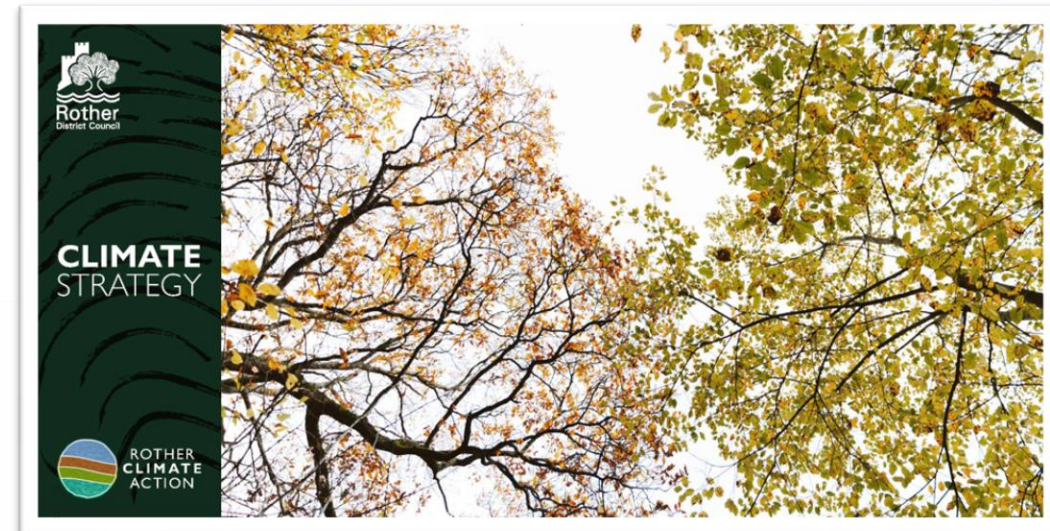
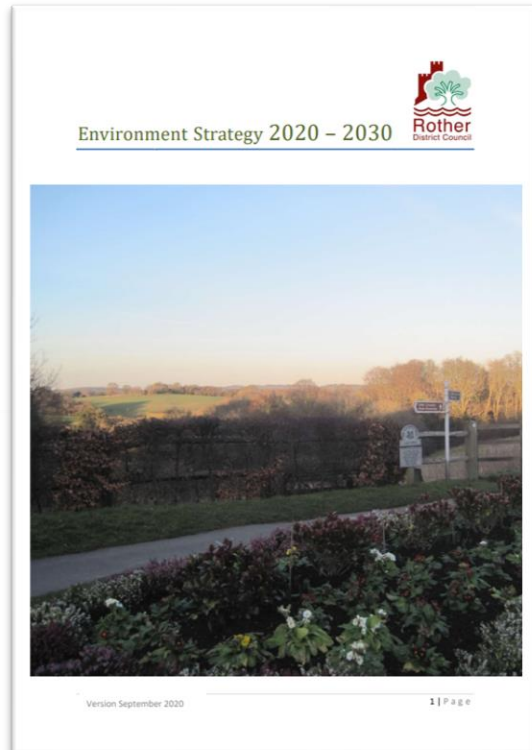
-  **Direct local authority emissions
(2% of UK emissions)**
-  **Emissions under the influence
of local authorities
(33% of UK emissions)**

2020 Committee on Climate Change report



RDC Climate Emergency Declaration - 2019

'Pledge to do what is within our powers, to make Rother District carbon neutral by 2030, taking into account both production and consumption emissions'



Climate Strategy



BUILDINGS AND
ENERGY EFFICIENCY



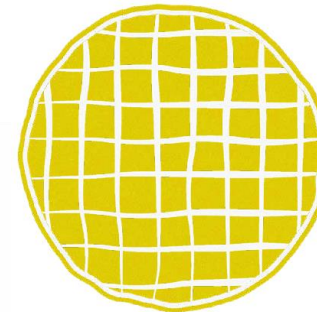
TRANSPORT



RESOURCE CONSUMPTION
AND WASTE



BIODIVERSITY AND
LAND USE



ENERGY GENERATION



Buildings and Energy Efficiency



- Council's direct emissions
 - Operational buildings
 - Town Hall
 - Temporary Accommodation
- District emissions
 - Leased buildings
 - Funding for low-income households
 - Working with SMEs
 - Parish and Town Councils
 - Energy Champions
 - LEAD – CA 1066
 - Village Halls Energy Project



Town and Parish Council Climate Action

- 8 of 33 Parish and Town Councils in Rother have made declarations
 - Battle
 - Bexhill
 - Brightling
 - Crowhurst
 - Ewhurst
 - Hurst Green
 - Sedlescombe
 - Salehurst and Robertsbridge
- Establish a sub-committee
- Carbon baselining/ reporting
- Climate Action Plan
- Reducing emissions

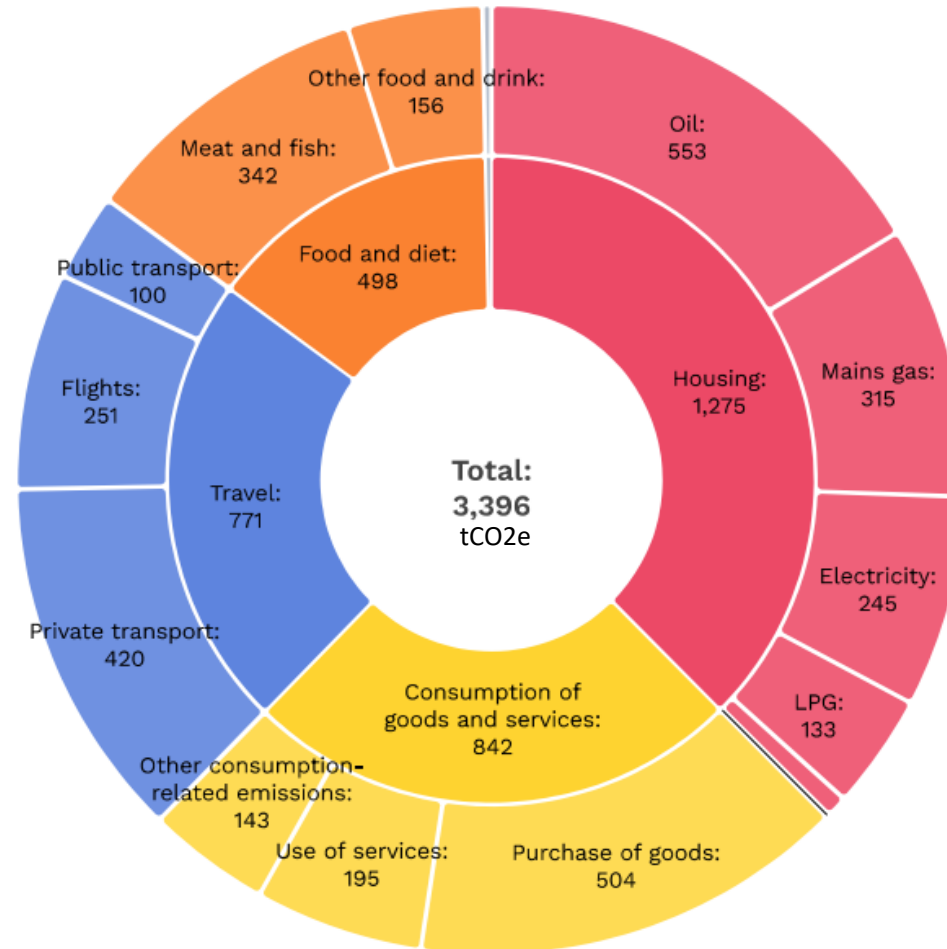


Climate and
Ecological
Emergency Toolkit
for Town and
Parish Councils

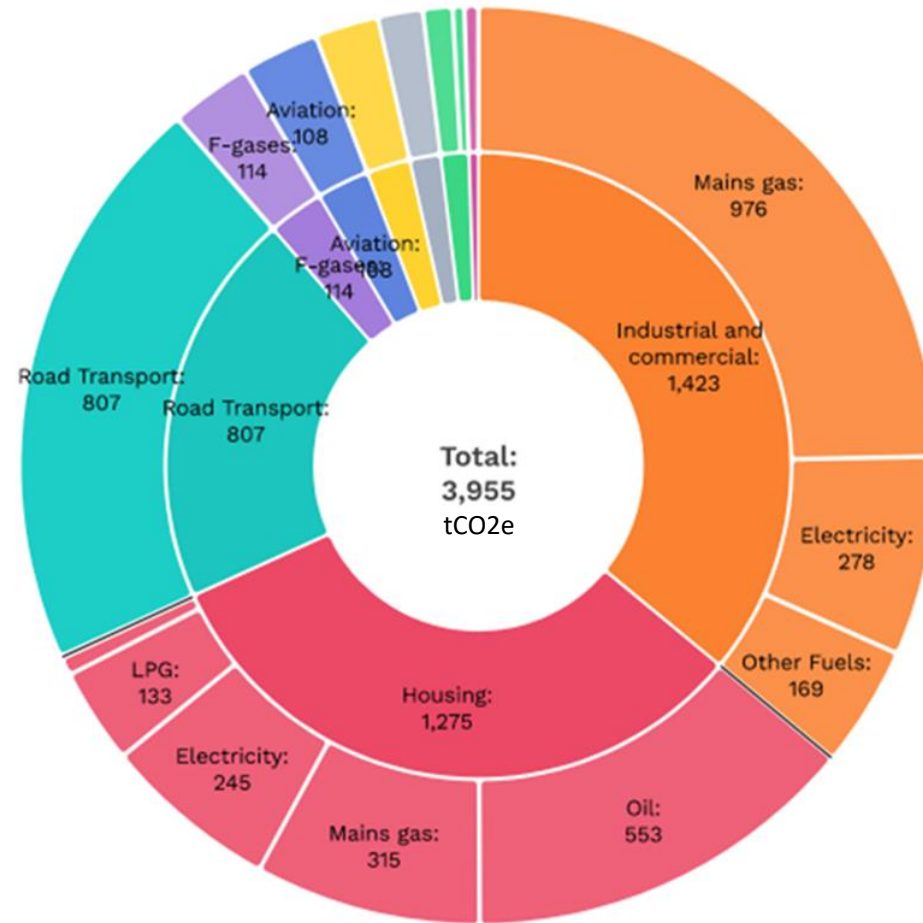
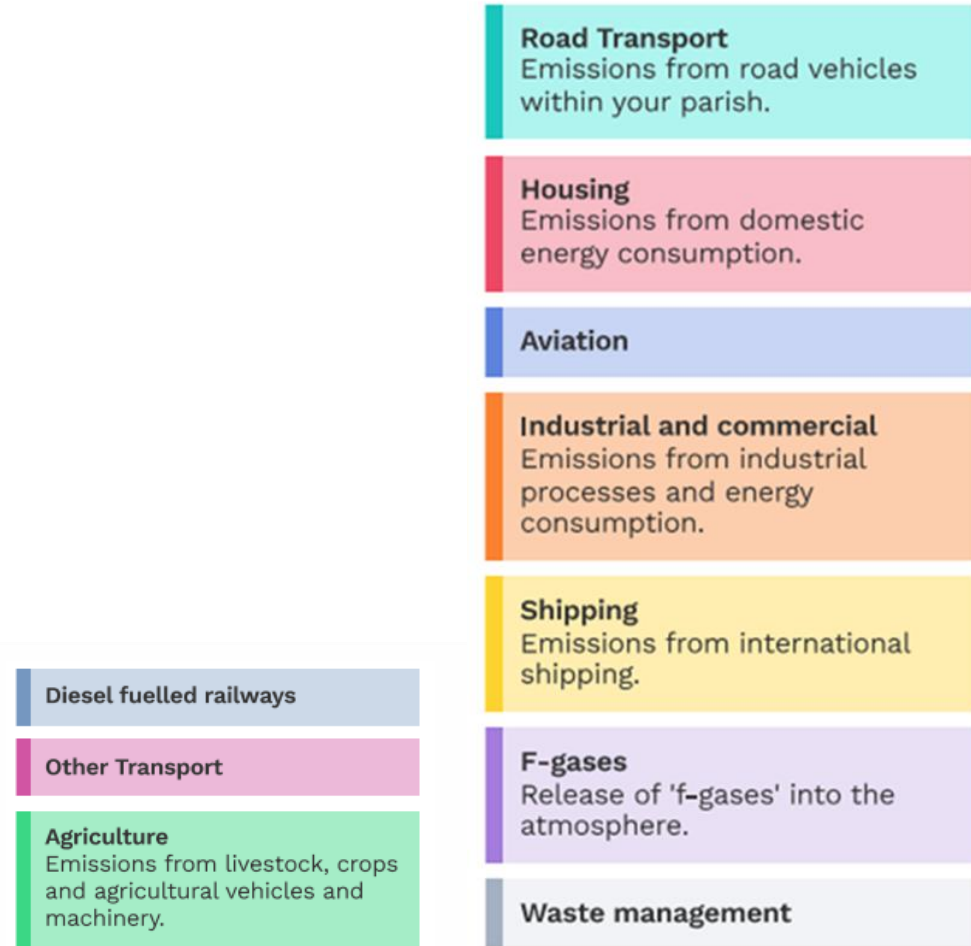
Rother District Council

Bodiam's Carbon Footprint - Consumption

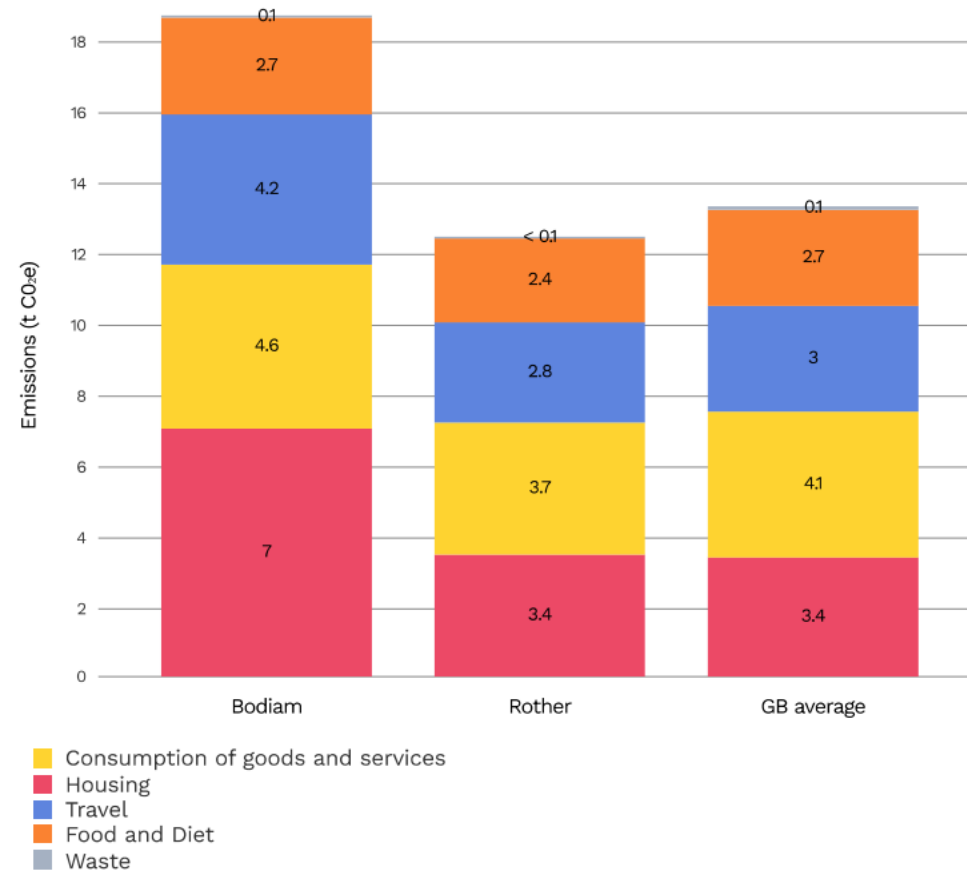
- Housing**
 Emissions resulting from residents' use of energy in their homes.
- Food and diet**
 Emissions resulting from the consumption of food and drink products by residents.
- Travel**
 Emissions resulting from the transport choices & behaviours of residents.
- Waste**
 Emissions resulting from the management of waste generated by residents.
- Consumption of goods and services**
 Emissions resulting from the purchase of goods and the use of services by residents.



Bodiam's Carbon Footprint - Territorial

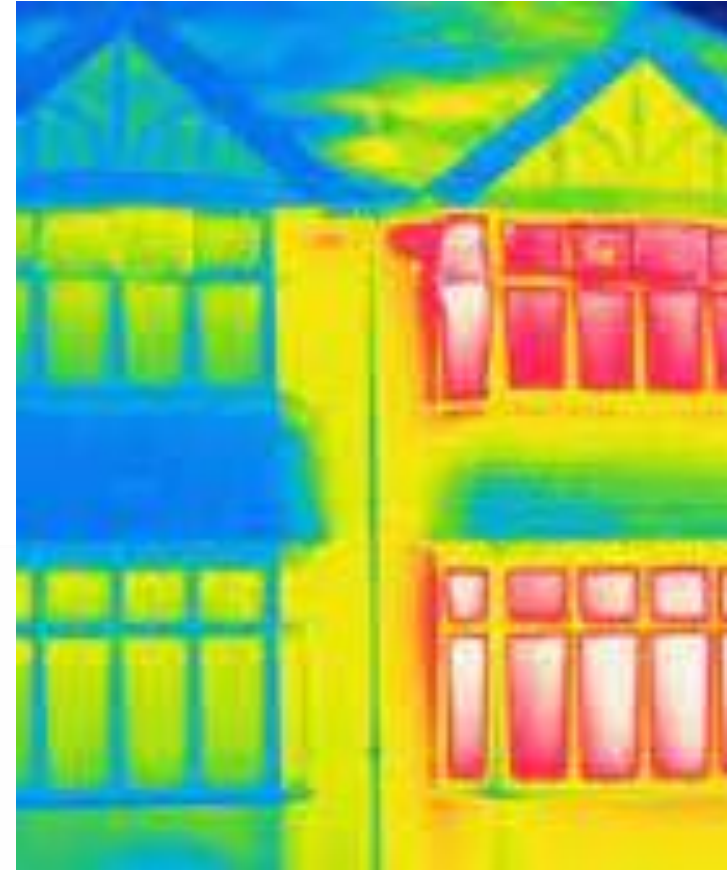


Bodiam's Carbon Footprint - Household



Town and Parish Council Climate Action

- Climate Action examples
 - Develop and promote green transport plans, including safe routes to school, car clubs, EV charging points, cycling etc
 - Home energy efficiency education
 - Community food growing schemes
 - Community composting
 - Repair hubs and library of things
 - Reusable nappy library
 - Food waste reduction
 - Climate education
 - Parish litter reduction
 - Plastic and packaging reduction
 - Manage green spaces for wildlife



RDC Support and Funding

- Corporate Plan – Climate Emergency – Support PCs to declare a Climate Emergency and take climate action
- Staff support – PC’s Organisational Carbon Footprint using the LGA tool
- Funding
 - [Rother Reduce, Reuse and Recycle Grants Scheme – Rother District Council](#)
 - [Community Grants Scheme – Rother District Council](#)
 - [Rural Spaces Improvement Grants – Rother District Council](#)
 - [Rural Community Infrastructure Grants – Rother District Council](#)
 - [Community Infrastructure Levy \(CIL\) – Rother District Council](#)
 - [Coronation Community Orchard Grants Scheme – Rother District Council](#)